

CTSE Rabbit Polyclonal Antibody



CAB2678

Product Information

Size:

20uL, 50uL, 100uL, 200uL

Observed MW:

43kDa

Calculated MW:

39kDa/42kDa/43kDa

Applications:

WB IHC IF

Reactivity:

Human, Mouse

Protein Background

This gene encodes a member of the A1 family of peptidases. Alternative splicing of this gene results in multiple transcript variants. At least one of these variants encodes a preproprotein that is proteolytically processed to generate the mature enzyme. This enzyme, an aspartic endopeptidase, may be involved in antigen processing and the maturation of secretory proteins. Elevated expression of this gene has been observed in neurodegeneration.

Immunogen information

Gene ID:

1510

Uniprot

P14091

Synonyms:

CTSE; CATE

Antibody Information

Recommended dilutions:

WB 1:500 - 1:2000 IHC 1:50
- 1:200 IF 1:50 - 1:200

Source:

Rabbit

Isotype:

IgG

Purification:

Affinity purification

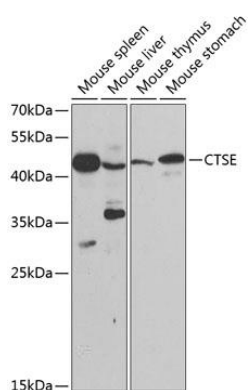
Immunogen:

Recombinant protein of human CTSE

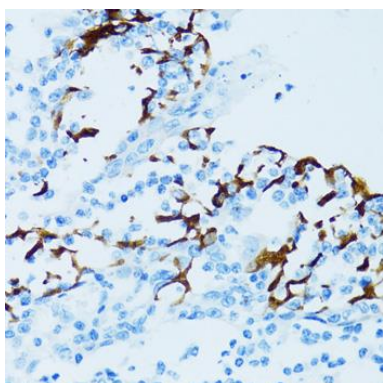
Storage:

Store at -20°C. Avoid freeze / thaw cycles. Buffer: PBS with 0.02% sodium azide, 50% glycerol, pH7.3.

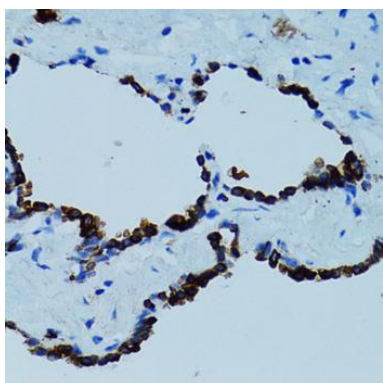
Product Images



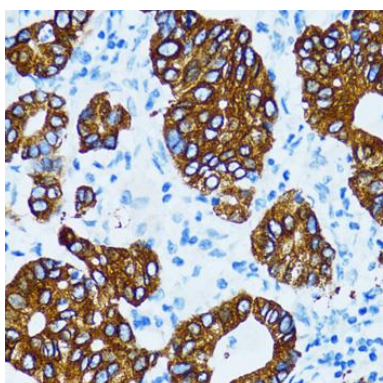
Western blot analysis of extracts of various cell lines, using CTSE antibody (CAB2678) at 1:200 dilution. Secondary antibody: HRP Goat Anti-Rabbit IgG (H+L) (CABS014) at 1:10000 dilution. Lysates/proteins: 25ug per lane. Blocking buffer: 3% nonfat dry milk in TBST.



Immunohistochemistry of paraffin-embedded human tonsil using CTSE antibody (CAB2678) at dilution of 1:100 (40x lens).



Immunohistochemistry of paraffin-embedded human lung using CTSE antibody (CAB2678) at dilution of 1:100 (40x lens).



Immunohistochemistry of paraffin-embedded human gastric cancer using CTSE antibody (CAB2678) at dilution of 1:100 (40x lens).