

CCL25 Rabbit Polyclonal Antibody



CAB2685

Product Information

Size:

20uL, 50uL, 100uL, 200uL

Observed MW:

Calculated MW:

9kDa/16kDa

Applications:

IF

Reactivity:

Human

Antibody Information

Recommended dilutions:

IF 1:50 - 1:200

Source:

Rabbit

Isotype:

IgG

Purification:

Affinity purification

Protein Background

This antimicrobial gene belongs to the subfamily of small cytokine CC genes. Cytokines are a family of secreted proteins involved in immunoregulatory and inflammatory processes. The CC cytokines are proteins characterized by two adjacent cysteines. The cytokine encoded by this gene displays chemotactic activity for dendritic cells, thymocytes, and activated macrophages but is inactive on peripheral blood lymphocytes and neutrophils. The product of this gene binds to chemokine receptor CCR9. Alternative splicing results in multiple transcript variants.

Immunogen information

Gene ID:

6370

Uniprot

O15444

Synonyms:

CCL25; Ckb15; SCYA25; TECK

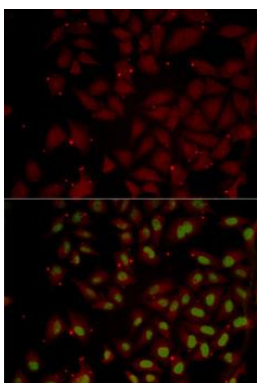
Immunogen:

Recombinant fusion protein containing a sequence corresponding to amino acids 24-150 of human CCL25 (NP_005615.2).

Storage:

Store at -20°C. Avoid freeze / thaw cycles. Buffer: PBS with 0.02% sodium azide, 50% glycerol, pH7.3.

Product Images



Immunofluorescence analysis of MCF7 cells using CCL25 antibody (CAB2685). Blue: DAPI for nuclear staining.