

# CDK10 Rabbit Polyclonal Antibody



CAB2690

---

## Product Information

### Size:

20uL, 50uL, 100uL, 200uL

### Observed MW:

46kDa

### Calculated MW:

17kDa/21kDa/30kDa/31kDa/  
32kDa/41kDa

### Applications:

WB IHC IF

### Reactivity:

Human, Mouse

## Antibody Information

### Recommended dilutions:

WB 1:500 - 1:2000 IHC 1:50  
- 1:200 IF 1:50 - 1:200

### Source:

Rabbit

### Isotype:

IgG

### Purification:

Affinity purification

## Protein Background

The protein encoded by this gene belongs to the CDK subfamily of the Ser/Thr protein kinase family. The CDK subfamily members are highly similar to the gene products of *S. cerevisiae* cdc28, and *S. pombe* cdc2, and are known to be essential for cell cycle progression. This kinase has been shown to play a role in cellular proliferation and its function is limited to cell cycle G2-M phase. Multiple transcript variants encoding different isoforms have been found for this gene.

## Immunogen information

### Gene ID:

8558

### Uniprot

Q15131

### Synonyms:

CDK10; PISSLRE

### Immunogen:

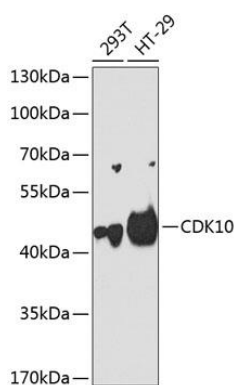
Recombinant fusion protein containing a sequence corresponding to amino acids 1-283 of human CDK10 (NP\_001092003.2).

### Storage:

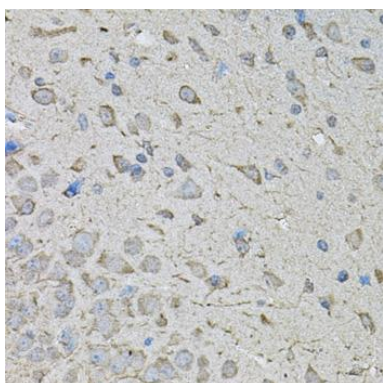
Store at -20°C. Avoid freeze / thaw cycles. Buffer: PBS with 0.02% sodium azide, 50% glycerol, pH7.3.

## Product Images

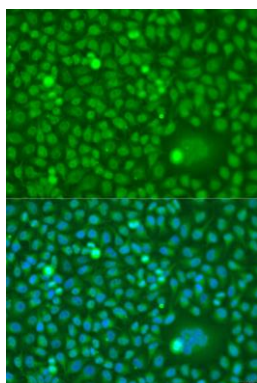
---



Western blot analysis of extracts of various cell lines, using CDK10 antibody (CAB2690) at 1:1000 dilution. Secondary antibody: HRP Goat Anti-Rabbit IgG (H+L) (CABS014) at 1:10000 dilution. Lysates/proteins: 25ug per lane. Blocking buffer: 3% nonfat dry milk in TBST. Detection: ECL Basic Kit (CABM00020). Exposure time: 90s.



Immunohistochemistry of paraffin-embedded mouse brain using CDK10 antibody (CAB2690) at dilution of 1:100 (40x lens).



Immunofluorescence analysis of U2OS cells using CDK10 antibody (CAB2690) at dilution of 1:100. Blue: DAPI for nuclear staining.