

# CLEC4D Rabbit Polyclonal Antibody



CAB2697

## Product Information

### Size:

20uL, 50uL, 100uL, 200uL

### Observed MW:

27KDa

### Calculated MW:

24kDa

### Applications:

WB IF

### Reactivity:

Human, Mouse, Rat

## Protein Background

This gene encodes a member of the C-type lectin/C-type lectin-like domain (CTL/CTLD) superfamily. Members of this family share a common protein fold and have diverse functions, such as cell adhesion, cell-cell signalling, glycoprotein turnover, and roles in inflammation and immune response. This gene is closely linked to other CTL/CTLD superfamily members on chromosome 12p13 in the natural killer gene complex region.

## Immunogen information

### Gene ID:

338339

### Uniprot

Q8WXI8

### Synonyms:

CLEC4D; CD368; CLEC-6; CLEC6; CLECSF8; MCL; MPCL

## Antibody Information

### Recommended dilutions:

WB 1:1000 - 1:4000 IF 1:50  
- 1:200

### Source:

Rabbit

### Isotype:

IgG

### Purification:

Affinity purification

### Immunogen:

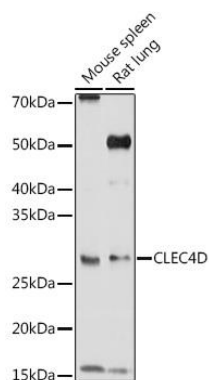
Recombinant fusion protein containing a sequence corresponding to amino acids 39-215 of human CLEC4D (NP\_525126.2).

### Storage:

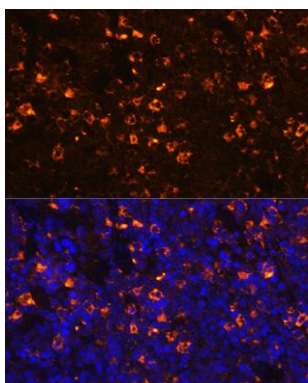
Store at -20°C. Avoid freeze / thaw cycles. Buffer: PBS with 0.02% sodium azide, 50% glycerol, pH7.3.

## Product Images

---



Western blot analysis of extracts of various cell lines, using CLEC4D Rabbit pAb (CAB2697) at 1:1000 dilution. Secondary antibody: HRP Goat Anti-Rabbit IgG (H+L) (CABS014) at 1:10000 dilution. Lysates/proteins: 25ug per lane. Blocking buffer: 3% nonfat dry milk in TBST. Detection: ECL Basic Kit (CABM00020). Exposure time: 90s.



Immunofluorescence analysis of mouse spleen using CLEC4D Rabbit pAb (CAB2697) at dilution of 1:100 (40x lens). Blue: DAPI for nuclear staining.