

CRMP1 Rabbit Polyclonal Antibody



CAB2705

Product Information

Size:

50uL, 100uL, 200uL

Observed MW:

62kDa

Calculated MW:

62kDa/74kDa

Applications:

WB IHC

Reactivity:

Human, Mouse, Rat

Protein Background

This gene encodes a member of a family of cytosolic phosphoproteins expressed exclusively in the nervous system. The encoded protein is thought to be a part of the semaphorin signal transduction pathway implicated in semaphorin-induced growth cone collapse during neural development. Alternative splicing results in multiple transcript variants.

Immunogen information

Gene ID:

1400

Uniprot

Q14194

Synonyms:

CRMP1; CRMP-1; DPYSL1; DRP-1; DRP1; ULIP-3

Antibody Information

Recommended dilutions:

WB 1:500 - 1:2000 IHC 1:25
- 1:100

Source:

Rabbit

Isotype:

IgG

Purification:

Affinity purification

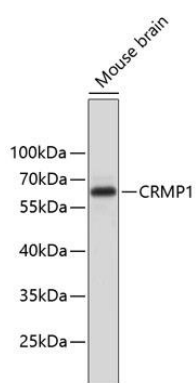
Immunogen:

Recombinant protein of human CRMP1

Storage:

Store at -20°C. Avoid freeze / thaw cycles. Buffer: PBS with 0.02% sodium azide, 50% glycerol, pH7.3.

Product Images



Western blot analysis of extracts of mouse brain, using CRMP1 antibody (CAB2705). Secondary antibody: HRP Goat Anti-Rabbit IgG (H+L) (CABS014) at 1:10000 dilution. Lysates/proteins: 25ug per lane. Blocking buffer: 3% nonfat dry milk in TBST.