

IL18R1 Rabbit Polyclonal Antibody



CAB2706

Product Information

Size:

20uL, 50uL, 100uL, 200uL

Observed MW:

75kDa

Calculated MW:

62kDa

Applications:

WB, IHC, IF

Reactivity:

Human, Mouse, Rat

Protein Background

The protein encoded by this gene is a cytokine receptor that belongs to the interleukin 1 receptor family. This receptor specifically binds interleukin 18 (IL18), and is essential for IL18 mediated signal transduction. IFN-alpha and IL12 are reported to induce the expression of this receptor in NK and T cells. This gene along with four other members of the interleukin 1 receptor family, including IL1R2, IL1R1, ILRL2 (IL-1Rrp2), and IL1RL1 (T1/ST2), form a gene cluster on chromosome 2q. Alternatively spliced transcript variants encoding different isoforms have been found for this gene.

Immunogen information

Gene ID:

8809

Uniprot

Q13478

Synonyms:

IL18R1; CD218a; CDw218a; IL-1Rrp; IL18RA; IL1RRP

Antibody Information

Recommended dilutions:

WB 1:500 - 1:1000

IHC 1:50 - 1:2000

IF 1:50 - 1:200

Source:

Rabbit

Isotype:

IgG

Purification:

Affinity purification

Immunogen:

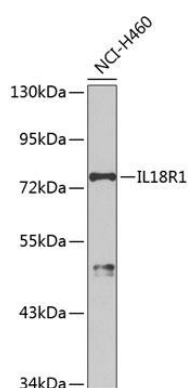
Recombinant fusion protein containing a sequence corresponding to amino acids 19-320 of human IL18R1 (NP_003846.1).

Storage:

Store at -20°C. Avoid freeze / thaw cycles.

Buffer: PBS with 0.02% sodium azide, 50% glycerol, pH7.3.

Product Images



Western blot analysis of extracts of NCI-H460 cells, using IL18R1 antibody (CAB2706) at 1:1000 dilution.

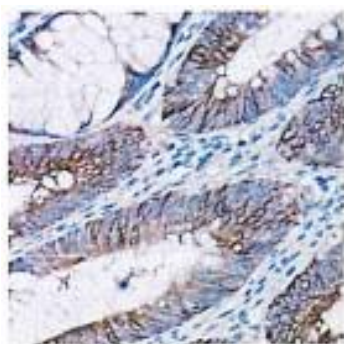
Secondary antibody: HRP Goat Anti-Rabbit IgG (H+L) (CABS014) at 1:10000 dilution.

Lysates/proteins: 25ug per lane.

Blocking buffer: 3% non-fat dry milk in TBST.

Detection: ECL Basic Kit (AbGn00020).

Exposure time: 90s.



Immunohistochemistry of paraffin-embedded human colon carcinoma using IL18R1 Rabbit pAb (CAB2706) at dilution of 1:150 (40x lens).



Immunohistochemistry of paraffin-embedded human lung cancer using IL18R1 Rabbit pAb (CAB2706) at dilution of 1:150 (40x lens)