

# E2F6 Rabbit Polyclonal Antibody



CAB2718

---

## Product Information

### Size:

20uL, 50uL, 100uL, 200uL

### Observed MW:

38kDa

### Calculated MW:

22kDa/28kDa/31kDa

### Applications:

WB IHC IF IP

### Reactivity:

Human

## Protein Background

This gene encodes a member of a family of transcription factors that play a crucial role in the control of the cell cycle. The protein encoded by this gene lacks the transactivation and tumor suppressor protein association domains found in other family members, and contains a modular suppression domain that functions in the inhibition of transcription. It interacts in a complex with chromatin modifying factors. There are pseudogenes for this gene on chromosomes 22 and X. Alternative splicing results in multiple transcript variants.

## Immunogen information

### Gene ID:

1876

### Uniprot

O75461

### Synonyms:

E2F6; E2F-6

## Antibody Information

### Recommended dilutions:

WB 1:500 - 1:2000 IHC 1:50  
- 1:200 IF 1:50 - 1:200 IP  
1:20 - 1:50

### Source:

Rabbit

### Isotype:

IgG

### Purification:

Affinity purification

### Immunogen:

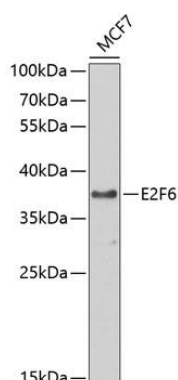
Recombinant fusion protein containing a sequence corresponding to amino acids 1-281 of human E2F6 (NP\_937987.2).

### Storage:

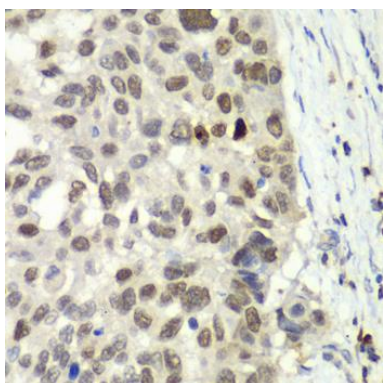
Store at -20°C. Avoid freeze / thaw cycles. Buffer: PBS with 0.02% sodium azide, 50% glycerol, pH7.3.

## Product Images

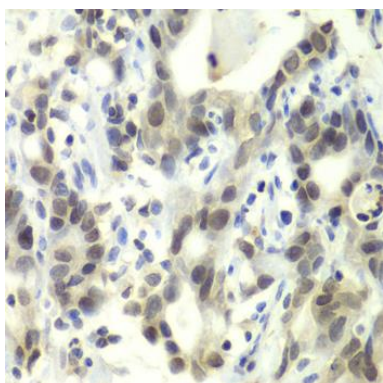
---



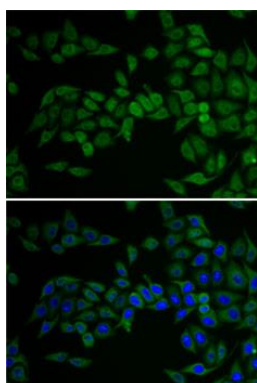
Western blot analysis of extracts of MCF-7 cells, using E2F6 antibody (CAB2718) at 1:1000 dilution. Secondary antibody: HRP Goat Anti-Rabbit IgG (H+L) (CABS014) at 1:10000 dilution. Lysates/proteins: 25ug per lane. Blocking buffer: 3% nonfat dry milk in TBST. Detection: ECL Basic Kit (CABM00020). Exposure time: 90s.



Immunohistochemistry of paraffin-embedded human esophageal cancer using E2F6 antibody (CAB2718) at dilution of 1:100 (40x lens).



Immunohistochemistry of paraffin-embedded human gastric cancer using E2F6 antibody (CAB2718) at dilution of 1:100 (40x lens).



Immunofluorescence analysis of U2OS cells using E2F6 antibody (CAB2718). Blue: DAPI for nuclear staining.