

FOSL2 Rabbit Polyclonal Antibody



CAB2729

Product Information

Size:

20uL, 50uL, 100uL, 200uL

Observed MW:

35kDa

Calculated MW:

31kDa/34kDa/35kDa

Applications:

WB IHC IF

Reactivity:

Human, Rat

Protein Background

The Fos gene family consists of 4 members: FOS, FOSB, FOSL1, and FOSL2. These genes encode leucine zipper proteins that can dimerize with proteins of the JUN family, thereby forming the transcription factor complex AP-1. As such, the FOS proteins have been implicated as regulators of cell proliferation, differentiation, and transformation.

Immunogen information

Gene ID:

2355

Uniprot

P15408

Synonyms:

FOSL2; FRA2

Antibody Information

Recommended dilutions:

WB 1:500 - 1:2000 IHC

1:100 - 1:200 IF 1:50 -

1:200

Source:

Rabbit

Immunogen:

Recombinant fusion protein containing a sequence corresponding to amino acids 187-326 of human FOSL2 (NP_005244.1).

Storage:

Store at -20°C. Avoid freeze / thaw cycles. Buffer: PBS with 0.02% sodium azide, 50% glycerol, pH7.3.

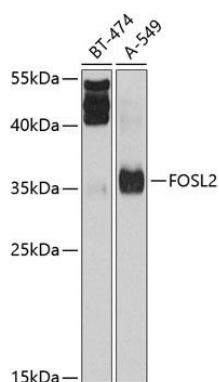
Isotype:

IgG

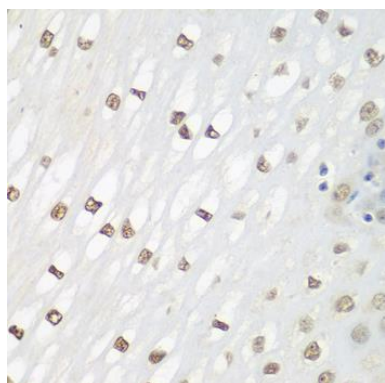
Purification:

Affinity purification

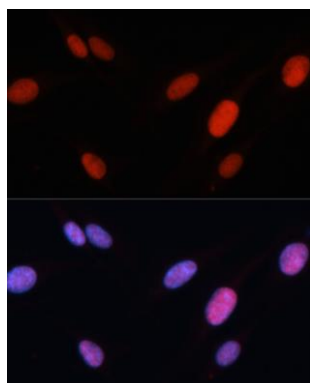
Product Images



Western blot analysis of extracts of various cell lines, using FOSL2 antibody (CAB2729) at 1:1000 dilution. Secondary antibody: HRP Goat Anti-Rabbit IgG (H+L) (CABS014) at 1:10000 dilution. Lysates/proteins: 25ug per lane. Blocking buffer: 3% nonfat dry milk in TBST. Detection: ECL Basic Kit (CABM00020). Exposure time: 30s.



Immunohistochemistry of paraffin-embedded human esophagus using FOSL2 antibody (CAB2729) at dilution of 1:100 (40x lens).



Immunofluorescence analysis of U-2 OS cells using FOSL2 antibody (CAB2729) at dilution of 1:100. Blue: DAPI for nuclear staining.