

CFHR1 Rabbit Polyclonal Antibody



CAB2743

Product Information

Size:

20uL, 50uL, 100uL, 200uL

Observed MW:

43kDa

Calculated MW:

37kDa

Applications:

WB

Reactivity:

Human, Mouse, Rat

Antibody Information

Recommended dilutions:

WB 1:500 - 1:2000

Source:

Rabbit

Isotype:

IgG

Purification:

Affinity purification

Protein Background

This gene encodes a secreted protein belonging to the complement factor H protein family. It binds to *Pseudomonas aeruginosa* elongation factor Tuf together with plasminogen, which is proteolytically activated. It is proposed that Tuf acts as a virulence factor by acquiring host proteins to the pathogen surface, controlling complement, and facilitating tissue invasion. Mutations in this gene are associated with an increased risk of atypical hemolytic-uremic syndrome.

Immunogen information

Gene ID:

3078

Uniprot

Q03591

Synonyms:

CFHR1; CFHL; CFHL1; CFHL1P; CFHR1P; FHR1; H36-1; H36-2; HFL1; HFL2

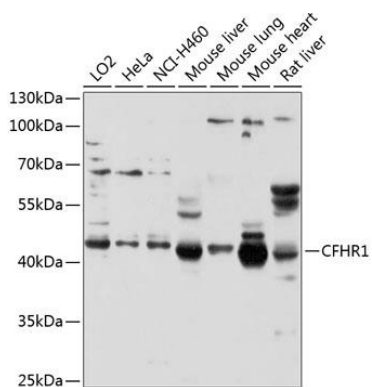
Immunogen:

Recombinant fusion protein containing a sequence corresponding to amino acids 151-330 of human CFHR1 (NP_002104.2).

Storage:

Store at -20°C. Avoid freeze / thaw cycles. Buffer: PBS with 0.02% sodium azide, 50% glycerol, pH7.3.

Product Images



Western blot analysis of extracts of various cell lines, using CFHR1 antibody (CAB2743) at 1:1000 dilution. Secondary antibody: HRP Goat Anti-Rabbit IgG (H+L) (CABS014) at 1:10000 dilution. Lysates/proteins: 25ug per lane. Blocking buffer: 3% nonfat dry milk in TBST. Detection: ECL Basic Kit (CABM00020). Exposure time: 30s.