

# HSF2 Rabbit Polyclonal Antibody



CAB2747

## Product Information

### Size:

20uL, 50uL, 100uL, 200uL

### Observed MW:

60kDa

### Calculated MW:

58kDa/60kDa

### Applications:

WB IHC IF

### Reactivity:

Human, Rat

## Protein Background

The protein encoded by this gene belongs to the HSF family of transcription factors that bind specifically to the heat-shock promoter element and activate transcription. Heat shock transcription factors activate heat-shock response genes under conditions of heat or other stresses. Alternatively spliced transcript variants encoding different isoforms have been found for this gene.

## Immunogen information

### Gene ID:

3298

### Uniprot

Q03933

### Synonyms:

HSF2; HSF 2; HSTF 2; HSTF2

## Antibody Information

### Recommended dilutions:

WB 1:500 - 1:2000 IHC 1:50  
- 1:200 IF 1:50 - 1:200

### Source:

Rabbit

### Isotype:

IgG

### Purification:

Affinity purification

### Immunogen:

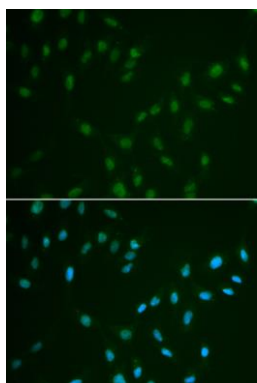
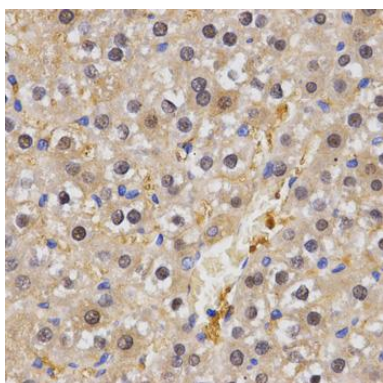
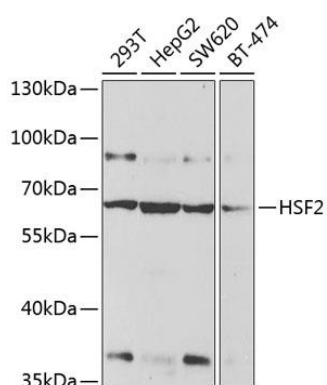
Recombinant protein of human HSF2

### Storage:

Store at -20°C. Avoid freeze / thaw cycles. Buffer: PBS with 0.02% sodium azide, 50% glycerol, pH7.3.

## Product Images

---



Western blot analysis of extracts of various cell lines, using HSF2 antibody (CAB2747) at 1:400 dilution. Secondary antibody: HRP Goat Anti-Rabbit IgG (H+L) (CABS014) at 1:10000 dilution. Lysates/proteins: 25ug per lane. Blocking buffer: 3% nonfat dry milk in TBST.

Immunohistochemistry of paraffin-embedded rat liver using HSF2 antibody (CAB2747) at dilution of 1:200 (40x lens).

Immunofluorescence analysis of A549 cells using HSF2 antibody (CAB2747). Blue: DAPI for nuclear staining.