

TRAP1 Rabbit Polyclonal Antibody



CAB2748

Product Information

Size:

20uL, 50uL, 100uL, 200uL

Observed MW:

80kDa

Calculated MW:

74kDa/80kDa

Applications:

WB IHC IF

Reactivity:

Human, Mouse, Rat

Protein Background

This gene encodes a mitochondrial chaperone protein that is member of the heat shock protein 90 (HSP90) family. The encoded protein has ATPase activity and interacts with tumor necrosis factor type I. This protein may function in regulating cellular stress responses. Alternate splicing results in multiple transcript variants.

Immunogen information

Gene ID:

10131

Uniprot

Q12931

Synonyms:

TRAP1; HSP 75; HSP75; HSP90L; TRAP-1

Antibody Information

Recommended dilutions:

WB 1:500 - 1:2000 IHC 1:50
- 1:200 IF 1:50 - 1:200

Source:

Rabbit

Isotype:

IgG

Purification:

Affinity purification

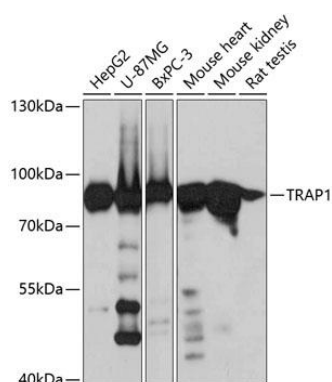
Immunogen:

Recombinant protein of human TRAP1

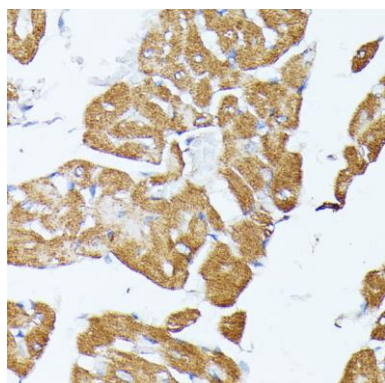
Storage:

Store at -20°C. Avoid freeze / thaw cycles. Buffer: PBS with 0.02% sodium azide, 50% glycerol, pH7.3.

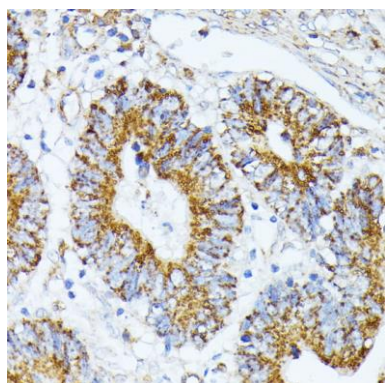
Product Images



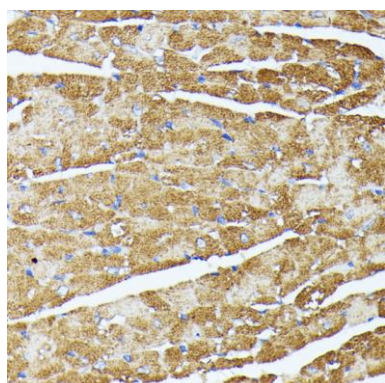
Western blot analysis of extracts of various cell lines, using TRAP1 antibody (CAB2748) at 1:3000 dilution. Secondary antibody: HRP Goat Anti-Rabbit IgG (H+L) (CABS014) at 1:10000 dilution. Lysates/proteins: 25ug per lane. Blocking buffer: 3% nonfat dry milk in TBST. Detection: ECL Basic Kit (CABM00020). Exposure time: 30s.



Immunohistochemistry of paraffin-embedded rat heart using TRAP1 antibody (CAB2748) at dilution of 1:100 (40x lens).



Immunohistochemistry of paraffin-embedded human colon carcinoma using TRAP1 antibody (CAB2748) at dilution of 1:100 (40x lens).



Immunohistochemistry of paraffin-embedded mouse heart using TRAP1 antibody (CAB2748) at dilution of 1:100 (40x lens).