

# CDH23 Rabbit Polyclonal Antibody



CAB2785

## Product Information

### Size:

20uL, 50uL, 100uL, 200uL

### Observed MW:

Refer to Figures

### Calculated MW:

23-27kDa/58kDa/119-  
133kDa/365- 369kDa

### Applications:

WB IHC

### Reactivity:

Human, Mouse

## Antibody Information

### Recommended dilutions:

WB 1:500 - 1:2000 IHC  
1:100 - 1:200

### Source:

Rabbit

### Isotype:

IgG

### Purification:

Affinity purification

## Protein Background

This gene is a member of the cadherin superfamily, whose genes encode calcium dependent cell-cell adhesion glycoproteins. The encoded protein is thought to be involved in stereocilia organization and hair bundle formation. The gene is located in a region containing the human deafness loci DFNB12 and USH1D. Usher syndrome 1D and nonsyndromic autosomal recessive deafness DFNB12 are caused by allelic mutations of this cadherin-like gene. Upregulation of this gene may also be associated with breast cancer. Alternative splice variants encoding different isoforms have been described.

## Immunogen information

### Gene ID:

64072

### Uniprot

Q9H251

### Synonyms:

CDH23; CDHR23; USH1D

### Immunogen:

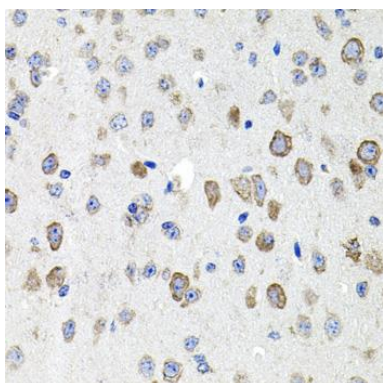
Recombinant protein of human CDH23

### Storage:

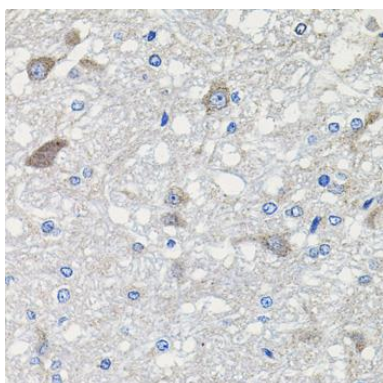
Store at -20°C. Avoid freeze / thaw cycles. Buffer: PBS with 0.02% sodium azide, 50% glycerol, pH7.3.

## Product Images

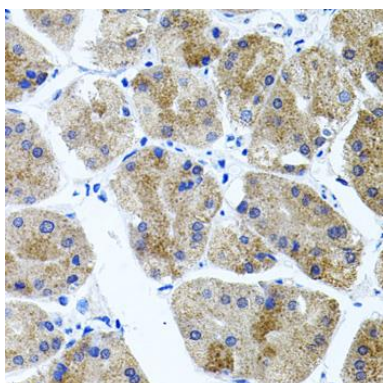
---



Immunohistochemistry of paraffin-embedded mouse brain using CDH23 antibody (CAB2785) at dilution of 1:100 (40x lens).



Immunohistochemistry of paraffin-embedded rat brain using CDH23 antibody (CAB2785) at dilution of 1:100 (40x lens).



Immunohistochemistry of paraffin-embedded human stomach using CDH23 antibody (CAB2785) at dilution of 1:100 (40x lens).