

PDCD10 Rabbit Polyclonal Antibody



CAB2786

Product Information

Size:

20uL, 50uL, 100uL, 200uL

Observed MW:

Calculated MW:

24kDa

Applications:

IHC

Reactivity:

Human, Rat

Antibody Information

Recommended dilutions:

IHC 1:50 - 1:100

Source:

Rabbit

Isotype:

IgG

Purification:

Affinity purification

Protein Background

This gene encodes an evolutionarily conserved protein associated with cell apoptosis. The protein interacts with the serine/threonine protein kinase MST4 to modulate the extracellular signal-regulated kinase (ERK) pathway. It also interacts with and is phosphorylated by serine/threonine kinase 25, and is thought to function in a signaling pathway essential for vascular development. Mutations in this gene are one cause of cerebral cavernous malformations, which are vascular malformations that cause seizures and cerebral hemorrhages. Multiple alternatively spliced variants, encoding the same protein, have been identified.

Immunogen information

Gene ID:

11235

Uniprot

Q9BUL8

Synonyms:

PDCD10; CCM3; TFAR15

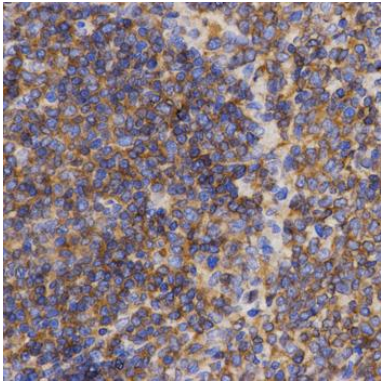
Immunogen:

A synthetic peptide of human PDCD10

Storage:

Store at -20°C. Avoid freeze / thaw cycles. Buffer: PBS with 0.02% sodium azide, 50% glycerol, pH7.3.

Product Images



Immunohistochemistry of paraffin-embedded rat spleen using PDCD10 antibody (CAB2786) at dilution of 1:200 (40x lens).