

VCP Rabbit Polyclonal Antibody



CAB2795

Product Information

Size:

20uL, 50uL, 100uL, 200uL

Observed MW:

90kDa

Calculated MW:

89kDa

Applications:

WB IHC

Reactivity:

Human, Mouse, Rat

Antibody Information

Recommended dilutions:

WB 1:500 - 1:2000 IHC 1:50
- 1:200

Source:

Rabbit

Isotype:

IgG

Purification:

Affinity purification

Protein Background

The protein encoded by this gene is a member of a family that includes putative ATP-binding proteins involved in vesicle transport and fusion, 26S proteasome function, and assembly of peroxisomes. This protein, as a structural protein, is associated with clathrin, and heat-shock protein Hsc70, to form a complex. It has been implicated in a number of cellular events that are regulated during mitosis, including homotypic membrane fusion, spindle pole body function, and ubiquitin-dependent protein degradation.

Immunogen information

Gene ID:

7415

Uniprot

P55072

Synonyms:

VCP; ALS14; CDC48; CMT2Y; HEL-220; HEL-S-70; IBMPFD;
IBMPFD1; TERA; p97

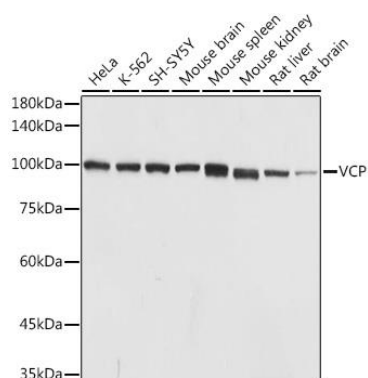
Immunogen:

A synthetic peptide of human VCP

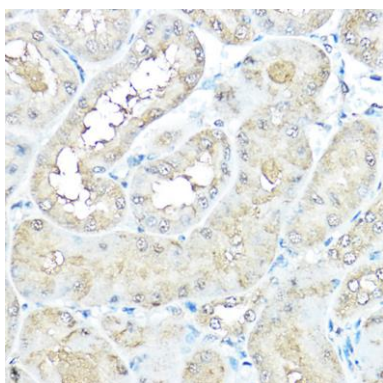
Storage:

Store at -20°C. Avoid freeze / thaw cycles. Buffer: PBS with 0.02% sodium azide, 50% glycerol, pH7.3.

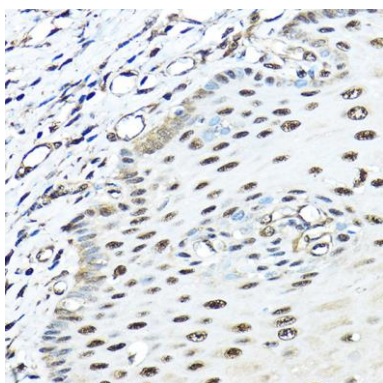
Product Images



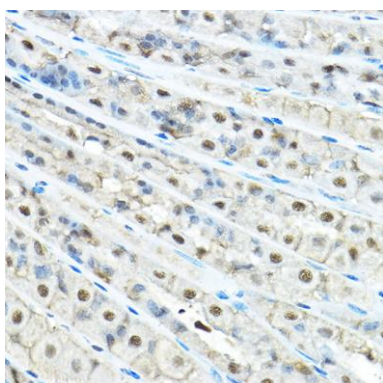
Western blot analysis of extracts of various cell lines, using VCP antibody (CAB2795) at 1:1000 dilution. Secondary antibody: HRP Goat Anti-Rabbit IgG (H+L) (CABS014) at 1:10000 dilution. Lysates/proteins: 25ug per lane. Blocking buffer: 3% nonfat dry milk in TBST. Detection: ECL Basic Kit (CABM00020). Exposure time: 1s.



Immunohistochemistry of paraffin-embedded rat kidney using VCP Rabbit pAb (CAB2795) at dilution of 1:100 (40x lens).



Immunohistochemistry of paraffin-embedded human esophageal using VCP Rabbit pAb (CAB2795) at dilution of 1:100 (40x lens).



Immunohistochemistry of paraffin-embedded mouse stomach using VCP Rabbit pAb (CAB2795) at dilution of 1:100 (40x lens).