

# SERPINA3 Rabbit Polyclonal Antibody



CAB2803

---

## Product Information

### Size:

20uL, 50uL, 100uL, 200uL

### Observed MW:

48kDa

### Calculated MW:

10kDa/24kDa/47kDa

### Applications:

WB IHC IF

### Reactivity:

Human, Mouse, Rat

## Protein Background

The protein encoded by this gene is a plasma protease inhibitor and member of the serine protease inhibitor class. Polymorphisms in this protein appear to be tissue specific and influence protease targeting. Variations in this protein's sequence have been implicated in Alzheimer's disease, and deficiency of this protein has been associated with liver disease. Mutations have been identified in patients with Parkinson disease and chronic obstructive pulmonary disease.

## Immunogen information

### Gene ID:

12

### Uniprot

P01011

### Synonyms:

SERPINA3; AACT; ACT; GIG24; GIG25

## Antibody Information

### Recommended dilutions:

WB 1:200 - 1:1000 IHC 1:50  
- 1:200 IF 1:50 - 1:200

### Source:

Rabbit

### Isotype:

IgG

### Purification:

Affinity purification

### Immunogen:

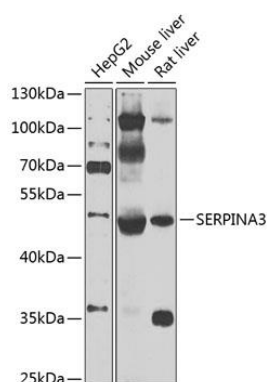
Recombinant fusion protein containing a sequence corresponding to amino acids 24-423 of human SERPINA3 (NP\_001076.2).

### Storage:

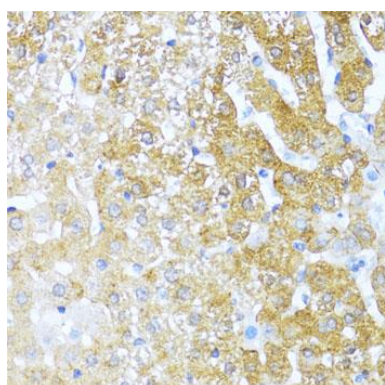
Store at -20°C. Avoid freeze / thaw cycles. Buffer: PBS with 0.02% sodium azide, 50% glycerol, pH7.3.

## Product Images

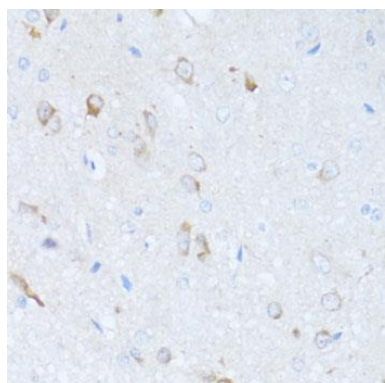
---



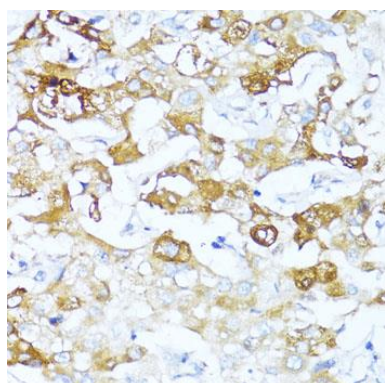
Western blot analysis of extracts of various cell lines, using SERPINA3 antibody (CAB2803) at 1:1000 dilution. Secondary antibody: HRP Goat Anti-Rabbit IgG (H+L) (CABS014) at 1:10000 dilution. Lysates/proteins: 25ug per lane. Blocking buffer: 3% nonfat dry milk in TBST. Detection: ECL Enhanced Kit (CABM00021). Exposure time: 30s.



Immunohistochemistry of paraffin-embedded rat liver using SERPINA3 antibody (CAB2803) at dilution of 1:100 (40x lens).



Immunohistochemistry of paraffin-embedded rat brain using SERPINA3 antibody (CAB2803) at dilution of 1:100 (40x lens).



Immunohistochemistry of paraffin-embedded human liver cancer using SERPINA3 antibody (CAB2803) at dilution of 1:100 (40x lens).