

ACE1 Rabbit Polyclonal Antibody



CAB2805

Product Information

Size:

20uL, 50uL, 100uL, 200uL

Observed MW:

170kDa

Calculated MW:

150kDa

Applications:

WB IHC-P

Reactivity:

Human, Mouse, Rat

Conjugation:

Unconjugated

Category:

Polyclonal Antibodies

Antibody Information

Recommended dilutions:

WB 1:500 - 1:1000
IHC 1:50- 1:200

Source:

Rabbit

Isotype:

IgG

Purification:

Affinity purification

Protein Background

This gene encodes an enzyme involved in blood pressure regulation and electrolyte balance. It catalyzes the conversion of angiotensin I into a physiologically active peptide angiotensin II. Angiotensin II is a potent vasopressor and aldosterone-stimulating peptide that controls blood pressure and fluid-electrolyte balance. This angiotensin converting enzyme (ACE) also inactivates the vasodilator protein, bradykinin. Accordingly, the encoded enzyme increases blood pressure. This enzyme additionally plays a role in fertility through its ability to cleave and release GPI-anchored membrane proteins in spermatozoa. Many studies have associated the presence or absence of a 287 bp Alu repeat element in this gene with the levels of circulating enzyme. This polymorphism, as well as mutations in this gene, have been implicated in a wide variety of diseases including cardiovascular pathophysiology, psoriasis, renal disease, stroke, and Alzheimer's disease. Regulation of the homologous ACE2 gene may be involved in progression of disease caused by several human coronaviruses, including SARS-CoV and SARS-CoV-2. Alternative splicing results in multiple transcript variants encoding both somatic (sACE) and male-specific testicular (tACE) isoforms.

Immunogen information

Gene ID:

1636

Uniprot

P12821

Synonyms:

ACE1; CD143; DCP; DCP1

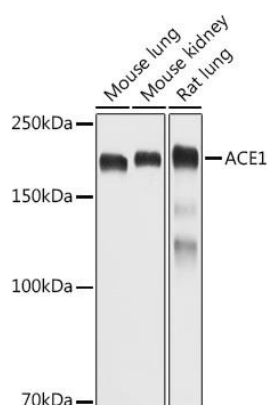
Immunogen:

Recombinant fusion protein containing a sequence corresponding to amino acids 554-758 of human ACE11 (NP_000780.1).

Storage:

Store at -20°C. Avoid freeze / thaw cycles. Buffer: PBS with 0.01% thiomersal, 50% glycerol, pH7.3.

Product Images

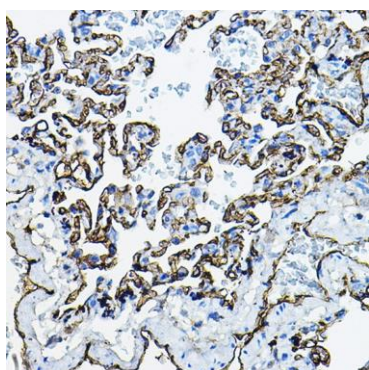


Western blot analysis of extracts of various cell lines, using ACE1 antibody (CAB2805) at 1:1000 dilution. Secondary antibody: HRP Goat Anti-Rabbit IgG (H+L) (CABS014) at 1:10000 dilution.

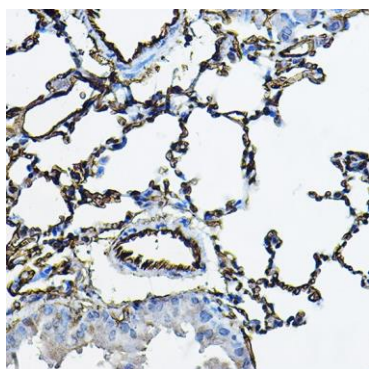
Lysates/proteins: 25ug per lane.

Blocking buffer: 3% nonfat dry milk in TBST. Detection: ECL Basic Kit (AbGn00020).

Exposure time: 10s.



Immunohistochemistry of paraffin- embedded rat lung using ACE11 Rabbit pAb (CAB2805) at dilution of 1:100 (40x lens). Perform high pressure antigen retrieval with 10 mM citrate buffer pH 6.0 before commencing with IHC staining protocol



Immunohistochemistry of paraffin- embedded mouse lung using ACE11 Rabbit pAb (CAB2805) at dilution of 1:100 (40x lens). Perform high pressure antigen retrieval with 10 mM citrate buffer pH 6.0 before commencing with IHC staining protocol.