

IAPP Rabbit Polyclonal Antibody



CAB2816

Product Information

Size:

20uL, 50uL, 100uL, 200uL

Observed MW:

Refer to figures

Calculated MW:

9kDa

Applications:

IHC IF

Reactivity:

Human, Mouse, Rat

Protein Background

This gene encodes a member of the calcitonin family of peptide hormones. This hormone is released from pancreatic beta cells following food intake to regulate blood glucose levels and act as a satiation signal. Human patients with type 1 and advanced type 2 diabetes exhibit reduced levels of the encoded hormone in blood and pancreas. This protein also exhibits a bactericidal, antimicrobial activity.

Immunogen information

Gene ID:

3375

Uniprot

P10997

Synonyms:

IAPP; DAP; IAP

Antibody Information

Recommended dilutions:

IHC 1:50 - 1:200 IF 1:50 - 1:200

Source:

Rabbit

Isotype:

IgG

Purification:

Affinity purification

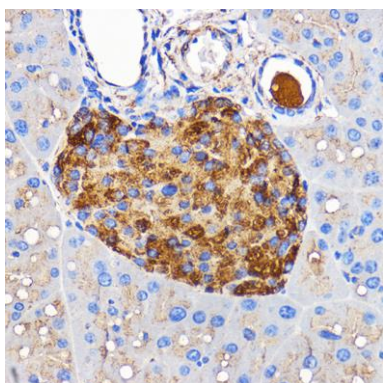
Immunogen:

A synthetic peptide of human IAPP

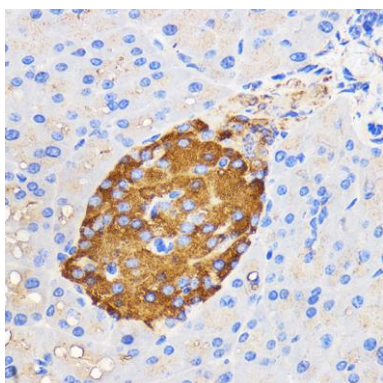
Storage:

Store at -20°C. Avoid freeze / thaw cycles. Buffer: PBS with 0.02% sodium azide, 50% glycerol, pH7.3.

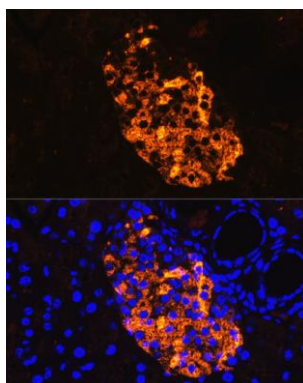
Product Images



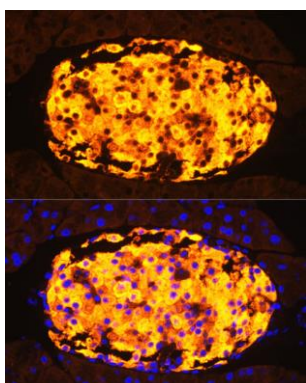
Immunohistochemistry of paraffin-embedded Rat pancreas using IAPP Rabbit pAb (CAB2816) at dilution of 1:100 (40x lens).



Immunohistochemistry of paraffin-embedded Mouse pancreas using IAPP Rabbit pAb (CAB2816) at dilution of 1:100 (40x lens).



Immunofluorescence analysis of rat pancreas using IAPP antibody (CAB2816) at dilution of 1:100. Blue: DAPI for nuclear staining.



Immunofluorescence analysis of mouse pancreas using IAPP antibody (CAB2816) at dilution of 1:100. Blue: DAPI for nuclear staining.