

RHOB Rabbit Polyclonal Antibody



CAB2819

Product Information

Size:

20uL, 50uL, 100uL, 200uL

Observed MW:

22kDa

Calculated MW:

22kDa

Applications:

WB IHC

Reactivity:

Human, Mouse

Antibody Information

Recommended dilutions:

WB 1:500 - 1:2000 IHC 1:50
- 1:100

Source:

Rabbit

Isotype:

IgG

Purification:

Affinity purification

Protein Background

Immunogen information

Gene ID:

388

Uniprot

P62745

Synonyms:

RHOB; ARH6; ARHB; MST081; MSTP081; RHOH6

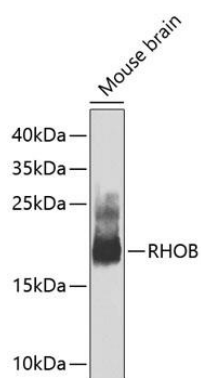
Immunogen:

A synthetic peptide corresponding to a sequence within amino acids 100 to the C-terminus of human RHOB (NP_004031.1).

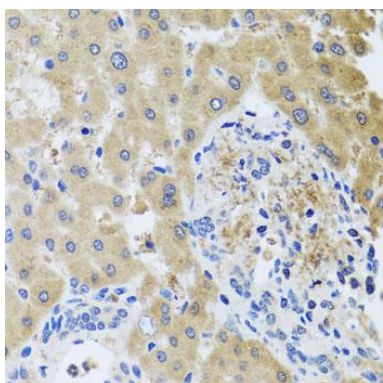
Storage:

Store at -20°C. Avoid freeze / thaw cycles. Buffer: PBS with 0.02% sodium azide, 50% glycerol, pH7.3.

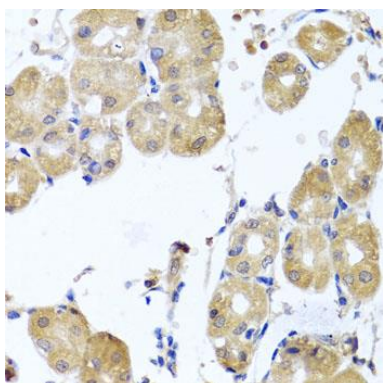
Product Images



Western blot analysis of extracts of mouse brain, using RHOB Antibody (CAB2819) at 1:1000 dilution. Secondary antibody: HRP Goat Anti-Rabbit IgG (H+L) (CABS014) at 1:10000 dilution. Lysates/proteins: 25ug per lane. Blocking buffer: 3% nonfat dry milk in TBST. Detection: ECL Enhanced Kit (CABM00021). Exposure time: 30s.



Immunohistochemistry of paraffin-embedded human liver damage using RHOB antibody (CAB2819) at dilution of 1:100 (40x lens).



Immunohistochemistry of paraffin-embedded human stomach using RHOB antibody (CAB2819) at dilution of 1:100 (40x lens).