

Bcl-2 Rabbit Polyclonal Antibody



CAB2845

Product Information

Size:

20uL, 50uL, 100uL, 200uL

Observed MW:

27kDa

Calculated MW:

22kDa/26kDa

Applications:

WB IF IP

Reactivity:

Human, Mouse, Rat

Protein Background

This gene encodes an integral outer mitochondrial membrane protein that blocks the apoptotic death of some cells such as lymphocytes. Constitutive expression of BCL2, such as in the case of translocation of BCL2 to Ig heavy chain locus, is thought to be the cause of follicular lymphoma. Alternative splicing results in multiple transcript variants.

Immunogen information

Gene ID:

596

Uniprot

P10415

Synonyms:

Bcl-2; PPP1R50; BCL2

Antibody Information

Recommended dilutions:

WB 1:500 - 1:1000 IF 1:50 -
1:100 IP 1:50 - 1:100

Source:

Rabbit

Isotype:

IgG

Purification:

Affinity purification

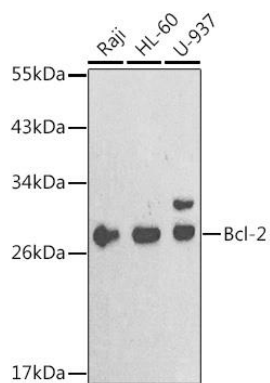
Immunogen:

A synthetic peptide corresponding to a sequence within amino acids 81-131 of human Bcl-2 (NP_000624.2).

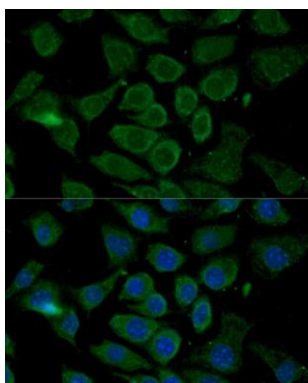
Storage:

Store at -20°C. Avoid freeze / thaw cycles. Buffer: PBS with 0.02% sodium azide, 50% glycerol, pH7.3.

Product Images



Western blot analysis of extracts of various cell lines, using Bcl-2 antibody (CAB2845) at 1:1000 dilution. Secondary antibody: HRP Goat Anti-Rabbit IgG (H+L) (CABS014) at 1:10000 dilution. Lysates/proteins: 25ug per lane. Blocking buffer: 3% nonfat dry milk in TBST.



Immunofluorescence analysis of L929 cells using Bcl-2 antibody (CAB2845) at dilution of 1:100. Blue: DAPI for nuclear staining.