

CCL3L1 Rabbit Polyclonal Antibody



CAB2852

Product Information

Size:

20uL, 50uL, 100uL, 200uL

Observed MW:

12kDa

Calculated MW:

10kDa

Applications:

WB

Reactivity:

Human

Antibody Information

Recommended dilutions:

WB 1:500 - 1:2000

Source:

Rabbit

Isotype:

IgG

Purification:

Affinity purification

Protein Background

This gene is one of several cytokine genes that are clustered on the q-arm of chromosome 17. Cytokines are a family of secreted proteins that function in inflammatory and immunoregulatory processes. The protein encoded by this gene binds to several chemokine receptors, including chemokine binding protein 2 and chemokine (C-C motif) receptor 5 (CCR5). CCR5 is a co-receptor for HIV, and binding of this protein to CCR5 inhibits HIV entry. The copy number of this gene varies among individuals, where most individuals have one to six copies, and a minority of individuals have zero or more than six copies. There are conflicting reports about copy number variation of this gene and its correlation to disease susceptibility. This record represents one of two copies that are present on the ALT_REF_LOCI_2 alternate haplotype of the GRCh38 human reference genome assembly. Alternative splicing of this gene results in multiple transcript variants.

Immunogen information

Gene ID:

6349

Uniprot

P16619

Synonyms:

CCL3L1; 464.2; D17S1718; G0S19-2; LD78; LD78-beta(1-70); LD78BETA; MIP1AP; SCYA3L; SCYA3L1

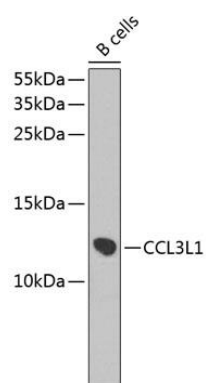
Immunogen:

Recombinant fusion protein containing a sequence corresponding to amino acids 24-93 of human CCL3L1 (NP_066286.1).

Storage:

Store at -20°C. Avoid freeze / thaw cycles. Buffer: PBS with 0.02% sodium azide, 50% glycerol, pH7.3.

Product Images



Western blot analysis of extracts of B-cell cells, using CCL3L1 antibody (CAB2852) at 1:1000 dilution. Secondary antibody: HRP Goat Anti-Rabbit IgG (H+L) (CABS014) at 1:10000 dilution. Lysates/proteins: 25ug per lane. Blocking buffer: 3% nonfat dry milk in TBST. Detection: ECL Enhanced Kit (CABM00021). Exposure time: 60s.