

CDK1 Rabbit Polyclonal Antibody



CAB2861

Product Information

Size:

20uL, 50uL, 100uL, 200uL

Observed MW:

34kDa

Calculated MW:

27kDa/34kDa

Applications:

WB IHC IP

Reactivity:

Human, Mouse, Rat

Antibody Information

Recommended dilutions:

WB 1:200 - 1:1000 IHC 1:50
- 1:100 IP 1:50 - 1:100

Source:

Rabbit

Isotype:

IgG

Purification:

Affinity purification

Protein Background

The protein encoded by this gene is a member of the Ser/Thr protein kinase family. This protein is a catalytic subunit of the highly conserved protein kinase complex known as M-phase promoting factor (MPF), which is essential for G1/S and G2/M phase transitions of eukaryotic cell cycle. Mitotic cyclins stably associate with this protein and function as regulatory subunits. The kinase activity of this protein is controlled by cyclin accumulation and destruction through the cell cycle. The phosphorylation and dephosphorylation of this protein also play important regulatory roles in cell cycle control. Alternatively spliced transcript variants encoding different isoforms have been found for this gene.

Immunogen information

Gene ID:

983

Uniprot

P06493

Synonyms:

CDK1; CDC2; CDC28A; P34CDC2

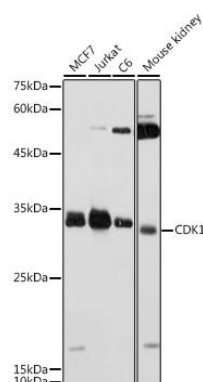
Immunogen:

A synthetic peptide corresponding to a sequence within amino acids 208-258 of human CDK1 (NP_001777.1).

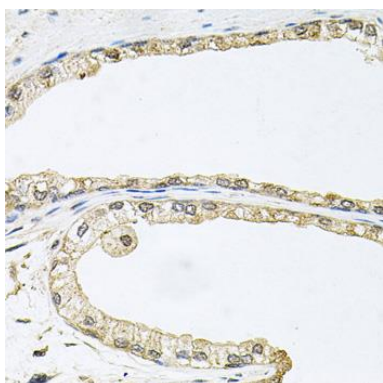
Storage:

Store at -20°C. Avoid freeze / thaw cycles. Buffer: PBS with 0.02% sodium azide, 50% glycerol, pH7.3.

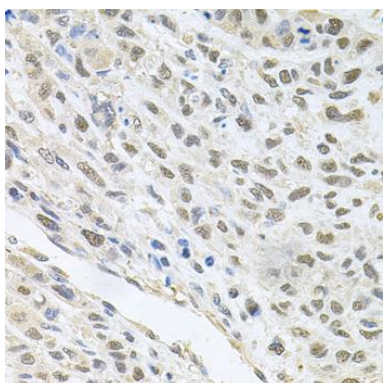
Product Images



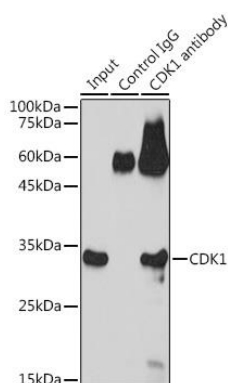
Western blot analysis of extracts of various cell lines, using CDK1 antibody (CAB2861) at 1:1000 dilution. Secondary antibody: HRP Goat Anti-Rabbit IgG (H+L) (CABS014) at 1:10000 dilution. Lysates/proteins: 25ug per lane. Blocking buffer: 3% nonfat dry milk in TBST. Detection: ECL Basic Kit (CABM00020). Exposure time: 10s.



Immunohistochemistry of paraffin-embedded human prostate using CDK1 antibody (CAB2861) at dilution of 1:100 (40x lens).



Immunohistochemistry of paraffin-embedded human lung cancer using CDK1 antibody (CAB2861) at dilution of 1:100 (40x lens).



Immunoprecipitation analysis of 600ug extracts of C6 cells using 3ug CDK1 antibody (CAB2861). Western blot was performed from the immunoprecipitate using CDK1 antibody (CAB2861) at a dilution of 1:1000.