

# CPT2 Rabbit Polyclonal Antibody



CAB2876

## Product Information

### Size:

20uL, 50uL, 100uL, 200uL

### Observed MW:

70-85kDa

### Calculated MW:

73kDa

### Applications:

WB IHC

### Reactivity:

Human, Mouse, Rat

## Protein Background

The protein encoded by this gene is a nuclear protein which is transported to the mitochondrial inner membrane. Together with carnitine palmitoyltransferase I, the encoded protein oxidizes long-chain fatty acids in the mitochondria. Defects in this gene are associated with mitochondrial long-chain fatty-acid (LCFA) oxidation disorders.

## Immunogen information

### Gene ID:

1376

### Uniprot

P23786

### Synonyms:

CPT2; CPT1; CPTASE; IIAE4

## Antibody Information

### Recommended dilutions:

WB 1:500 - 1:2000 IHC 1:50  
- 1:100

### Source:

Rabbit

### Isotype:

IgG

### Purification:

Affinity purification

### Immunogen:

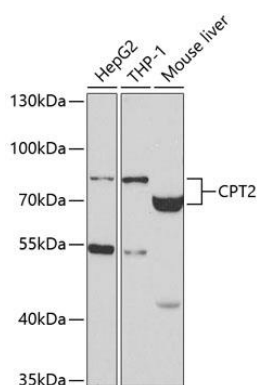
A synthetic peptide of human CPT2

### Storage:

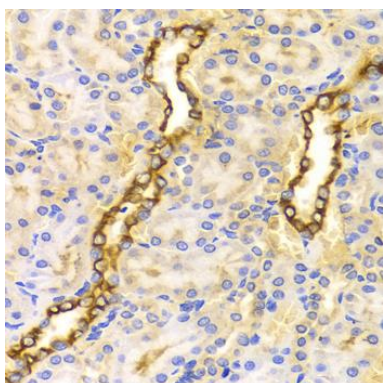
Store at -20°C. Avoid freeze / thaw cycles. Buffer: PBS with 0.02% sodium azide, 50% glycerol, pH7.3.

## Product Images

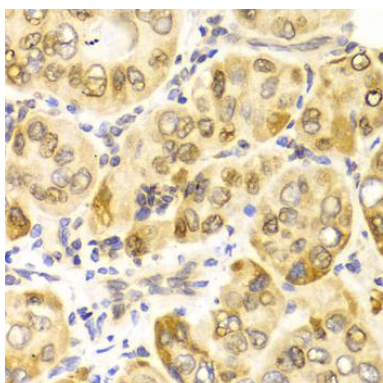
---



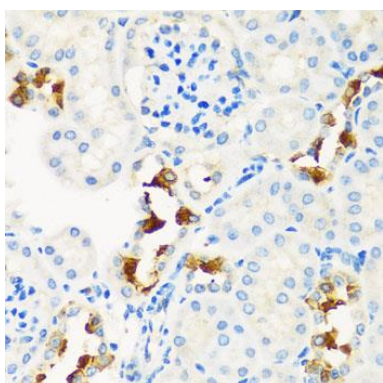
Western blot analysis of extracts of various cell lines, using CPT2 antibody (CAB2876) at 1:400 dilution. Secondary antibody: HRP Goat Anti-Rabbit IgG (H+L) (CABS014) at 1:10000 dilution. Lysates/proteins: 25ug per lane. Blocking buffer: 3% nonfat dry milk in TBST. Detection: ECL Basic Kit (CABM00020). Exposure time: 60s.



Immunohistochemistry of paraffin-embedded rat kidney using CPT2 antibody (CAB2876) at dilution of 1:100 (40x lens).



Immunohistochemistry of paraffin-embedded human liver cancer using CPT2 antibody (CAB2876) at dilution of 1:100 (40x lens).



Immunohistochemistry of paraffin-embedded mouse kidney using CPT2 antibody (CAB2876) at dilution of 1:100 (40x lens).