

# CUL2 Rabbit Polyclonal Antibody



CAB2881

---

## Product Information

### Size:

20uL, 50uL, 100uL, 200uL

### Observed MW:

Refer to figures

### Calculated MW:

86kDa/89kDa

### Applications:

WB IHC IF

### Reactivity:

Human, Mouse

## Antibody Information

### Recommended dilutions:

WB 1:500 - 1:2000 IHC 1:50  
- 1:200 IF 1:50 - 1:200

### Source:

Rabbit

### Isotype:

IgG

### Purification:

Affinity purification

## Protein Background

### Immunogen information

#### Gene ID:

8453

#### Uniprot

Q13617

#### Synonyms:

CUL2; cullin-2

#### Immunogen:

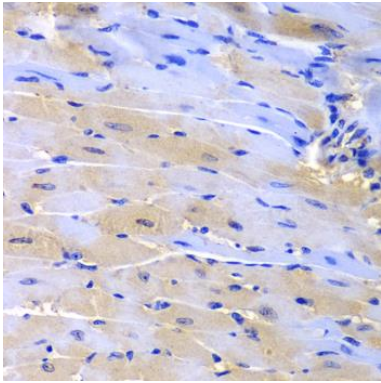
Recombinant fusion protein containing a sequence corresponding to amino acids 40-310 of human CUL2 (NP\_001185708.1).

#### Storage:

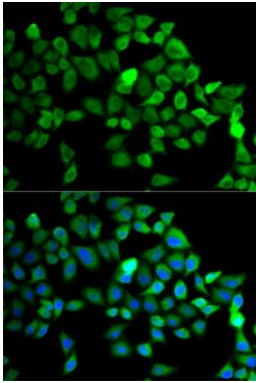
Store at -20°C. Avoid freeze / thaw cycles. Buffer: PBS with 0.02% sodium azide, 50% glycerol, pH7.3.

## Product Images

---



Immunohistochemistry of paraffin-embedded mouse heart using CUL2 antibody (CAB2881) at dilution of 1:200 (40x lens).



Immunofluorescence analysis of MCF-7 cells using CUL2 antibody (CAB2881). Blue: DAPI for nuclear staining.