

CUL4A Rabbit Polyclonal Antibody



CAB2882

Product Information

Size:

20uL, 50uL, 100uL, 200uL

Observed MW:

80kDa

Calculated MW:

76kDa/87kDa

Applications:

WB IF IP

Reactivity:

Human, Mouse, Rat

Protein Background

CUL4A is the ubiquitin ligase component of a multimeric complex involved in the degradation of DNA damage-response proteins (Liu et al., 2009 [PubMed 19481525]).[supplied by OMIM, Oct 2009]

Immunogen information

Gene ID:

8451

Uniprot

Q13619

Synonyms:

CUL4A; cullin-4A

Antibody Information

Recommended dilutions:

WB 1:500 - 1:2000 IF 1:50 -
1:100 IP 1:50 - 1:200

Source:

Rabbit

Isotype:

IgG

Purification:

Affinity purification

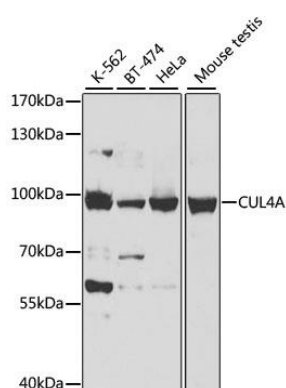
Immunogen:

A synthetic peptide of human CUL4A

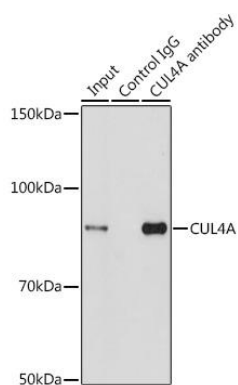
Storage:

Store at -20°C. Avoid freeze / thaw cycles. Buffer: PBS with 0.02% sodium azide, 50% glycerol, pH7.3.

Product Images



Western blot analysis of extracts of various cell lines, using CUL4A antibody (CAB2882) at 1:500 dilution. Secondary antibody: HRP Goat Anti-Rabbit IgG (H+L) (CABS014) at 1:10000 dilution. Lysates/proteins: 25ug per lane. Blocking buffer: 3% nonfat dry milk in TBST. Detection: ECL Basic Kit (CABM00020). Exposure time: 5s.



Immunoprecipitation analysis of 200ug extracts of HeLa cells using 3ug CUL4A antibody (CAB2882). Western blot was performed from the immunoprecipitate using CUL4A antibody (CAB2882) at a dilution of 1:1000.