

MIP Rabbit Polyclonal Antibody



CAB2886

Product Information

Size:

20uL, 50uL, 100uL, 200uL

Observed MW:

28kDa

Calculated MW:

28kDa

Applications:

WB IHC

Reactivity:

Human, Mouse, Rat

Protein Background

Major intrinsic protein is a member of the water-transporting aquaporins as well as the original member of the MIP family of channel proteins. The function of the fiber cell membrane protein encoded by this gene is undetermined, yet this protein is speculated to play a role in intracellular communication. The MIP protein is expressed in the ocular lens and is required for correct lens function. This gene has been mapped among aquaporins AQP2, AQP5, and AQP6, in a potential gene cluster at 12q13.

Immunogen information

Gene ID:

4284

Uniprot

P30301

Synonyms:

MIP; AQP0; CTRCT15; LIM1; MIP26; MP26

Antibody Information

Recommended dilutions:

WB 1:500 - 1:1000 IHC

1:100 - 1:200

Source:

Rabbit

Isotype:

IgG

Purification:

Affinity purification

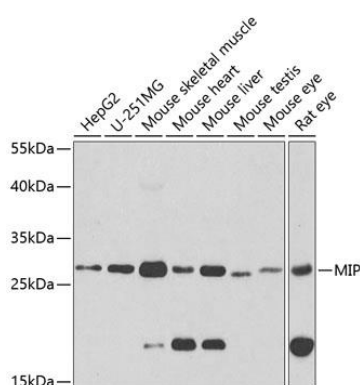
Immunogen:

A synthetic peptide corresponding to a sequence within amino acids 50-150 of human MIP (NP_036196.1).

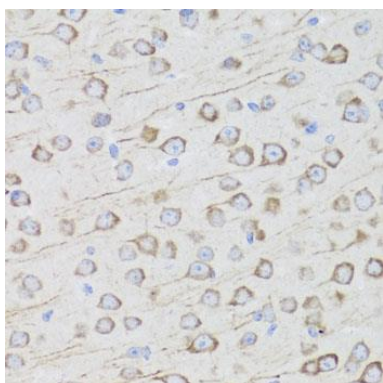
Storage:

Store at -20°C. Avoid freeze / thaw cycles. Buffer: PBS with 0.02% sodium azide, 50% glycerol, pH7.3.

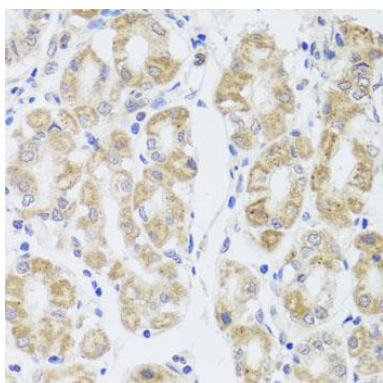
Product Images



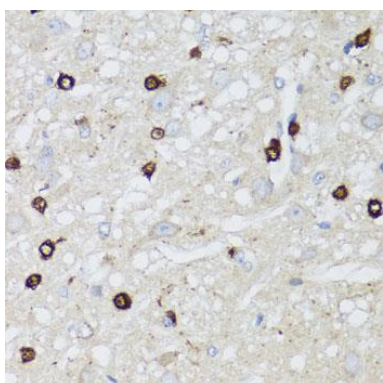
Western blot analysis of extracts of various cell lines, using MIP antibody (CAB2886) at 1:1000 dilution. Secondary antibody: HRP Goat Anti-Rabbit IgG (H+L) (CABS014) at 1:10000 dilution. Lysates/proteins: 25ug per lane. Blocking buffer: 3% nonfat dry milk in TBST. Detection: ECL Basic Kit (CABM00020). Exposure time: 90s.



Immunohistochemistry of paraffin-embedded mouse brain using MIP antibody (CAB2886) at dilution of 1:100 (40x lens).



Immunohistochemistry of paraffin-embedded human stomach using MIP antibody (CAB2886) at dilution of 1:100 (40x lens).



Immunohistochemistry of paraffin-embedded rat brain using MIP antibody (CAB2886) at dilution of 1:100 (40x lens).