

# Cyclin A2 Rabbit Polyclonal Antibody



CAB2891

## Product Information

### Size:

20uL, 50uL, 100uL, 200uL

### Observed MW:

55kDa

### Calculated MW:

48kDa

### Applications:

WB IHC

### Reactivity:

Human, Mouse, Rat

## Protein Background

The protein encoded by this gene belongs to the highly conserved cyclin family, whose members are characterized by a dramatic periodicity in protein abundance through the cell cycle. Cyclins function as regulators of CDK kinases. Different cyclins exhibit distinct expression and degradation patterns which contribute to the temporal coordination of each mitotic event. In contrast to cyclin A1, which is present only in germ cells, this cyclin is expressed in all tissues tested. This cyclin binds and activates CDC2 or CDK2 kinases, and thus promotes both cell cycle G1/S and G2/M transitions.

## Immunogen information

### Gene ID:

890

### Uniprot

P20248

### Synonyms:

CCN1; CCNA; Cyclin A2; CCNA2; cyclin-A2

## Antibody Information

### Recommended dilutions:

WB 1:500 - 1:2000 IHC 1:50  
- 1:200

### Source:

Rabbit

### Isotype:

IgG

### Purification:

Affinity purification

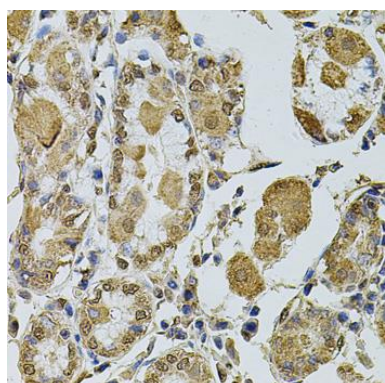
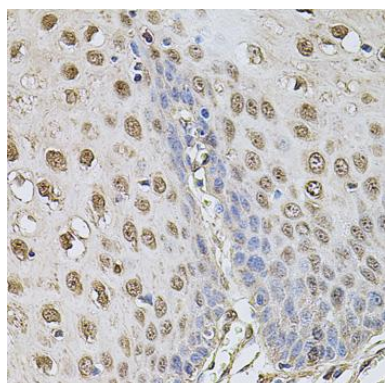
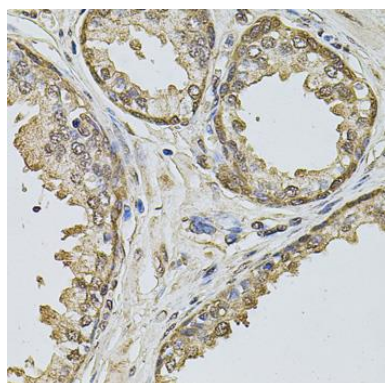
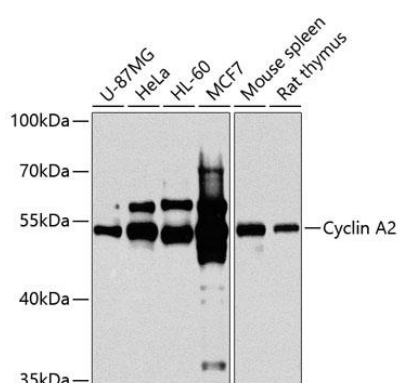
### Immunogen:

Recombinant fusion protein containing a sequence corresponding to amino acids 1-200 of human Cyclin A2 (NP\_001228.1).

### Storage:

Store at -20°C. Avoid freeze / thaw cycles. Buffer: PBS with 0.02% sodium azide, 50% glycerol, pH7.3.

## Product Images



Western blot analysis of extracts of various cell lines, using Cyclin A2 antibody (CAB2891) at 1:1000 dilution. Secondary antibody: HRP Goat Anti-Rabbit IgG (H+L) (CABS014) at 1:10000 dilution. Lysates/proteins: 25ug per lane. Blocking buffer: 3% nonfat dry milk in TBST. Detection: ECL Basic Kit (CABM00020). Exposure time: 30s.

Immunohistochemistry of paraffin-embedded human prostate using Cyclin A2 antibody (CAB2891) at dilution of 1:100 (40x lens).

Immunohistochemistry of paraffin-embedded human esophagus using Cyclin A2 antibody (CAB2891) at dilution of 1:100 (40x lens).

Immunohistochemistry of paraffin-embedded human stomach using Cyclin A2 antibody (CAB2891) at dilution of 1:100 (40x lens).