

EDA Rabbit Polyclonal Antibody



CAB2905

Product Information

Size:

20uL, 50uL, 100uL, 200uL

Observed MW:

48kDa

Calculated MW:

14kDa/15kDa/40kDa/41kDa

Applications:

WB IHC

Reactivity:

Human, Mouse, Rat

Antibody Information

Recommended dilutions:

WB 1:500 - 1:2000 IHC 1:50
- 1:200

Source:

Rabbit

Isotype:

IgG

Purification:

Affinity purification

Protein Background

The protein encoded by this gene is a type II membrane protein that can be cleaved by furin to produce a secreted form. The encoded protein, which belongs to the tumor necrosis factor family, acts as a homotrimer and may be involved in cell-cell signaling during the development of ectodermal organs. Defects in this gene are a cause of ectodermal dysplasia, anhidrotic, which is also known as X-linked hypohidrotic ectodermal dysplasia. Several transcript variants encoding many different isoforms have been found for this gene.

Immunogen information

Gene ID:

1896

Uniprot

Q92838

Synonyms:

EDA; ECTD1; ED1; ED1-A1; ED1-A2; EDA-A1; EDA-A2; EDA1; EDA2;
HED; HED1; ODT1; STHAGX1; TNLG7C; XHED; XLHED

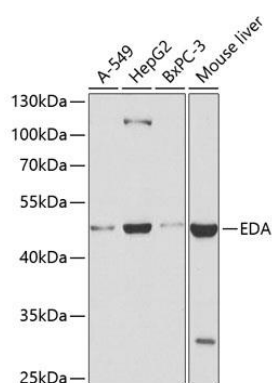
Immunogen:

A synthetic peptide of human EDA

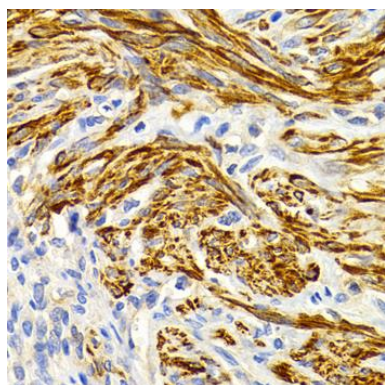
Storage:

Store at -20°C. Avoid freeze / thaw cycles. Buffer: PBS with 0.02% sodium azide, 50% glycerol, pH7.3.

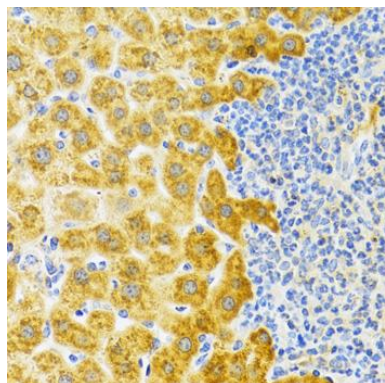
Product Images



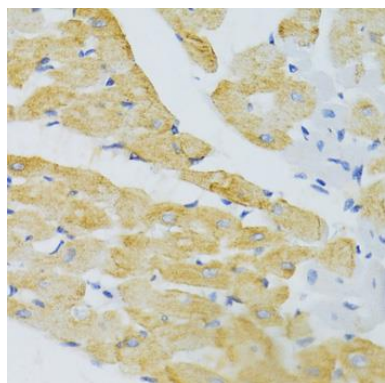
Western blot analysis of extracts of various cell lines, using EDA antibody (CAB2905) at 1:400 dilution. Secondary antibody: HRP Goat Anti-Rabbit IgG (H+L) (CABS014) at 1:10000 dilution. Lysates/proteins: 25ug per lane. Blocking buffer: 3% nonfat dry milk in TBST. Detection: ECL Enhanced Kit (CABM00021). Exposure time: 90s.



Immunohistochemistry of paraffin-embedded human uterine cancer using EDA Antibody (CAB2905) at dilution of 1:200 (40x lens).



Immunohistochemistry of paraffin-embedded rat liver using EDA Antibody (CAB2905) at dilution of 1:100 (40x lens).



Immunohistochemistry of paraffin-embedded mouse heart using EDA Antibody (CAB2905) at dilution of 1:100 (40x lens).