

# ENPP7 Rabbit Polyclonal Antibody



CAB2912

## Product Information

### Size:

20uL, 50uL, 100uL, 200uL

### Observed MW:

51kDa

### Calculated MW:

51kDa

### Applications:

WB

### Reactivity:

Human

## Protein Background

The protein encoded by this gene is an intestinal alkaline sphingomyelin phosphodiesterase that converts sphingomyelin to ceramide and phosphocholine. The encoded protein is anchored in the cell membrane, and it may function to protect the intestinal mucosa from inflammation and tumorigenesis. This protein is glycosylated and also exhibits lysophosphatidylcholine hydrolase activity.

## Immunogen information

### Gene ID:

339221

### Uniprot

Q6UWV6

### Synonyms:

ENPP7; ALK-SMase; E-NPP 7; NPP-7; NPP7; E-NPP7

## Antibody Information

### Recommended dilutions:

WB 1:500 - 1:2000

### Source:

Rabbit

### Isotype:

IgG

### Purification:

Affinity purification

### Immunogen:

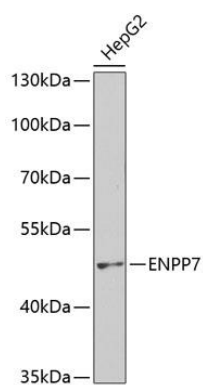
A synthetic peptide of human ENPP7

### Storage:

Store at -20°C. Avoid freeze / thaw cycles. Buffer: PBS with 0.02% sodium azide, 50% glycerol, pH7.3.

## Product Images

---



Western blot analysis of extracts of HepG2 cells, using ENPP7 antibody (CAB2912) at 1:400 dilution. Secondary antibody: HRP Goat Anti-Rabbit IgG (H+L) (CABS014) at 1:10000 dilution. Lysates/proteins: 25ug per lane. Blocking buffer: 3% nonfat dry milk in TBST. Detection: ECL Basic Kit (CABM00020). Exposure time: 90s.