

# GAD1 Rabbit Polyclonal Antibody



CAB2938

## Product Information

### Size:

20uL, 50uL, 100uL, 200uL

### Observed MW:

67kDa

### Calculated MW:

25kDa/47kDa/66kDa

### Applications:

WB IHC IF

### Reactivity:

Human, Mouse, Rat

## Antibody Information

### Recommended dilutions:

WB 1:500 - 1:2000 IHC 1:50  
- 1:200 IF 1:50 - 1:200

### Source:

Rabbit

### Isotype:

IgG

### Purification:

Affinity purification

## Protein Background

This gene encodes one of several forms of glutamic acid decarboxylase, identified as a major autoantigen in insulin-dependent diabetes. The enzyme encoded is responsible for catalyzing the production of gamma-aminobutyric acid from L-glutamic acid. A pathogenic role for this enzyme has been identified in the human pancreas since it has been identified as an autoantigen and an autoreactive T cell target in insulin-dependent diabetes. This gene may also play a role in the stiff man syndrome. Deficiency in this enzyme has been shown to lead to pyridoxine dependency with seizures. Alternative splicing of this gene results in two products, the predominant 67-kD form and a less-frequent 25-kD form.

## Immunogen information

### Gene ID:

2571

### Uniprot

Q99259

### Synonyms:

GAD1; CPSQ1; GAD; SCP

### Immunogen:

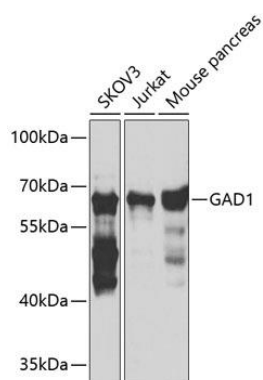
Recombinant fusion protein containing a sequence corresponding to amino acids 1-200 of human GAD1 (NP\_000808.2).

### Storage:

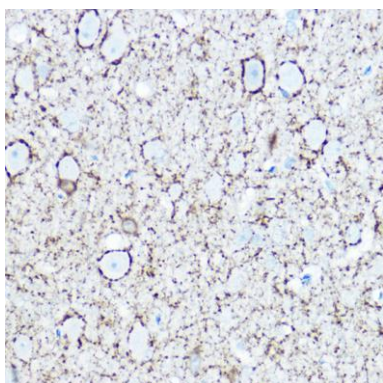
Store at -20°C. Avoid freeze / thaw cycles. Buffer: PBS with 0.02% sodium azide, 50% glycerol, pH7.3.

## Product Images

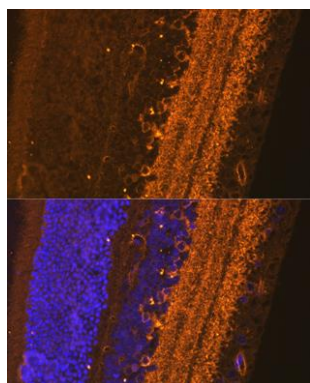
---



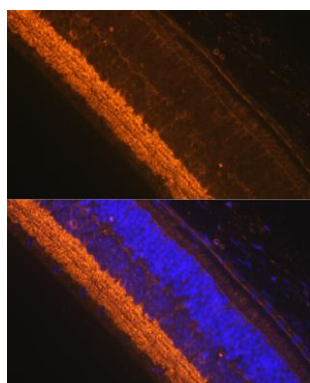
Western blot analysis of extracts of various cell lines, using GAD1 antibody (CAB2938) at 1:1000 dilution. Secondary antibody: HRP Goat Anti-Rabbit IgG (H+L) (CABS014) at 1:10000 dilution. Lysates/proteins: 25ug per lane. Blocking buffer: 3% nonfat dry milk in TBST. Detection: ECL Basic Kit (CABM00020). Exposure time: 60s.



Immunohistochemistry of paraffin-embedded rat brain using GAD1 Rabbit pAb (CAB2938) at dilution of 1:150 (40x lens).



Immunofluorescence analysis of Rat eyeball using GAD1 antibody (CAB2938) at dilution of 1:100. Blue: DAPI for nuclear staining.



Immunofluorescence analysis of Mouse eyeball using GAD1 antibody (CAB2938) at dilution of 1:100. Blue: DAPI for nuclear staining.