

CXCR3 Rabbit Polyclonal Antibody



CAB2939

Product Information

Size:

20uL, 50uL, 100uL, 200uL

Observed MW:

44kDa

Calculated MW:

28kDa/40kDa/45kDa

Applications:

WB IHC

Reactivity:

Human, Mouse

Antibody Information

Recommended dilutions:

WB 1:500 - 1:2000 IHC 1:50
- 1:100

Source:

Rabbit

Isotype:

IgG

Purification:

Affinity purification

Protein Background

This gene encodes a G protein-coupled receptor with selectivity for three chemokines, termed CXCL9/Mig (monokine induced by interferon-g), CXCL10/IP10 (interferon-g-inducible 10 kDa protein) and CXCL11/I-TAC (interferon-inducible T cell a-chemoattractant). Binding of chemokines to this protein induces cellular responses that are involved in leukocyte traffic, most notably integrin activation, cytoskeletal changes and chemotactic migration. Alternatively spliced transcript variants encoding different isoforms have been found for this gene. One of the isoforms (CXCR3-B) shows high affinity binding to chemokine, CXCL4/PF4 (PMID:12782716).

Immunogen information

Gene ID:

2833

Uniprot

P49682

Synonyms:

CXCR3; CD182; CD183; CKR-L2; CMKAR3; GPR9; IP10-R; Mig-R;
MigR

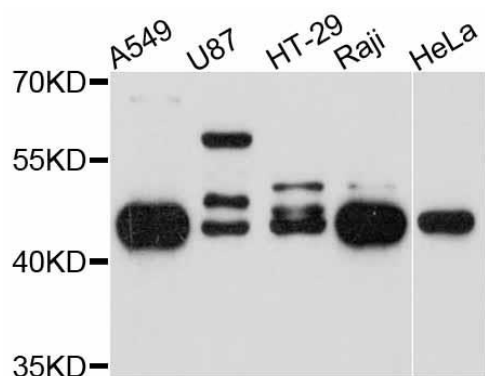
Immunogen:

Recombinant fusion protein containing a sequence corresponding to amino acids 289-368 of human CXCR3 (NP_001495.1).

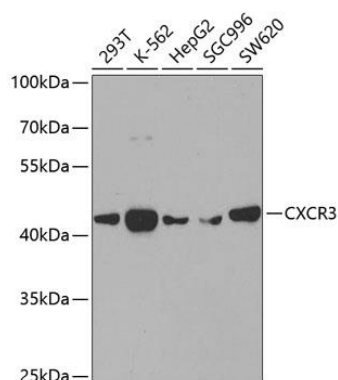
Storage:

Store at -20°C. Avoid freeze / thaw cycles. Buffer: PBS with 0.02% sodium azide, 50% glycerol, pH7.3.

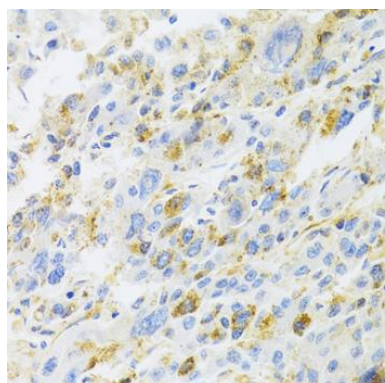
Product Images



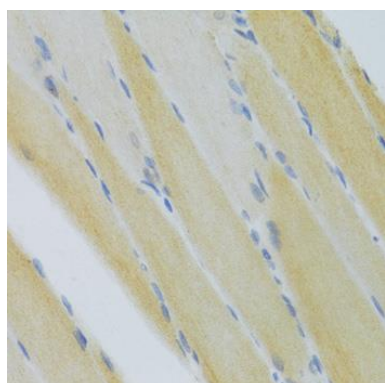
Western blot analysis of extracts of various cell lines, using CXCR3 antibody (CAB2939) at 1:3000 dilution. Secondary antibody: HRP Goat Anti-Rabbit IgG (H+L) (CABS014) at 1:10000 dilution. Lysates/proteins: 25ug per lane. Blocking buffer: 3% nonfat dry milk in TBST. Detection: ECL Basic Kit (CABM00020). Exposure time: 90s.



Western blot analysis of extracts of various cell lines, using CXCR3 antibody (CAB2939) at 1:400 dilution. Secondary antibody: HRP Goat Anti-Rabbit IgG (H+L) (CABS014) at 1:10000 dilution. Lysates/proteins: 25ug per lane. Blocking buffer: 3% nonfat dry milk in TBST. Detection: ECL Basic Kit (CABM00020). Exposure time: 90s.



Immunohistochemistry of paraffin-embedded human liver cancer using CXCR3 Antibody (CAB2939) at dilution of 1:100 (40x lens).



Immunohistochemistry of paraffin-embedded mouse skeletal muscle using CXCR3 Antibody (CAB2939) at dilution of 1:100 (40x lens).