

CLDN4 Rabbit Polyclonal Antibody



CAB2947

Product Information

Size:

20uL, 50uL, 100uL, 200uL

Observed MW:

22kDa

Calculated MW:

22kDa

Applications:

WB IHC

Reactivity:

Human

Protein Background

The protein encoded by this intronless gene belongs to the claudin family. Claudins are integral membrane proteins that are components of the epithelial cell tight junctions, which regulate movement of solutes and ions through the paracellular space. This protein is a high-affinity receptor for Clostridium perfringens enterotoxin (CPE) and may play a role in internal organ development and function during pre- and postnatal life. This gene is deleted in Williams-Beuren syndrome, a neurodevelopmental disorder affecting multiple systems.

Immunogen information

Gene ID:

1364

Uniprot

O14493

Synonyms:

CLDN4; CPE-R; CPER; CPETR; CPETR1; WBSCR8; hCPE-R; claudin-4

Antibody Information

Recommended dilutions:

WB 1:500 - 1:2000 IHC 1:25 - 1:100

Source:

Rabbit

Isotype:

IgG

Purification:

Affinity purification

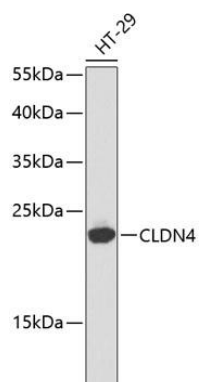
Immunogen:

A synthetic peptide of human CLDN4

Storage:

Store at -20°C. Avoid freeze / thaw cycles. Buffer: PBS with 0.02% sodium azide, 50% glycerol, pH7.3.

Product Images



Western blot analysis of extracts of HT-29 cells, using CLDN4 antibody (CAB2947). Secondary antibody: HRP Goat Anti-Rabbit IgG (H+L) (CABS014) at 1:10000 dilution. Lysates/proteins: 25ug per lane. Blocking buffer: 3% nonfat dry milk in TBST.