

# GRM1 Rabbit Polyclonal Antibody



CAB2963

## Product Information

### Size:

20uL, 50uL, 100uL, 200uL

### Observed MW:

132kDa

### Calculated MW:

101kDa/132kDa

### Applications:

WB

### Reactivity:

Mouse

## Antibody Information

### Recommended dilutions:

WB 1:500 - 1:2000

### Source:

Rabbit

### Isotype:

IgG

### Purification:

Affinity purification

## Protein Background

This gene encodes a metabotropic glutamate receptor that functions by activating phospholipase C. L-glutamate is the major excitatory neurotransmitter in the central nervous system and activates both ionotropic and metabotropic glutamate receptors. Glutamatergic neurotransmission is involved in most aspects of normal brain function and can be perturbed in many neuropathologic conditions. The canonical alpha isoform of the encoded protein is a disulfide-linked homodimer whose activity is mediated by a G-protein-coupled phosphatidylinositol-calcium second messenger system. This gene may be associated with many disease states, including schizophrenia, bipolar disorder, depression, and breast cancer. Alternative splicing results in multiple transcript variants encoding different isoforms.

## Immunogen information

### Gene ID:

2911

### Uniprot

Q13255

### Synonyms:

GRM1; GPRC1A; MGLU1; MGLUR1; PPP1R85; SCAR13

### Immunogen:

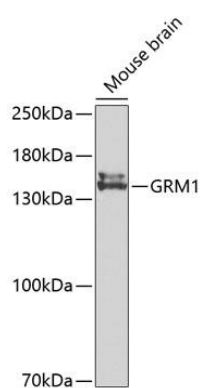
A synthetic peptide of human GRM1

### Storage:

Store at -20°C. Avoid freeze / thaw cycles. Buffer: PBS with 0.02% sodium azide, 50% glycerol, pH7.3.

## Product Images

---



Western blot analysis of extracts of mouse brain, using GRM1 antibody (CAB2963) at 1:500 dilution. Secondary antibody: HRP Goat Anti-Rabbit IgG (H+L) (CABS014) at 1:10000 dilution. Lysates/proteins: 25ug per lane. Blocking buffer: 3% nonfat dry milk in TBST. Detection: ECL Basic Kit (CABM00020). Exposure time: 90s.