

KISS1R Rabbit Polyclonal Antibody



CAB2967

Product Information

Size:

20uL, 50uL, 100uL, 200uL

Observed MW:

43kDa

Calculated MW:

42kDa

Applications:

WB IHC

Reactivity:

Human, Mouse, Rat

Protein Background

The protein encoded by this gene is a galanin-like G protein-coupled receptor that binds metastatin, a peptide encoded by the metastasis suppressor gene KISS1. The tissue distribution of the expressed gene suggests that it is involved in the regulation of endocrine function, and this is supported by the finding that this gene appears to play a role in the onset of puberty. Mutations in this gene have been associated with hypogonadotropic hypogonadism and central precocious puberty.

Immunogen information

Gene ID:

84634

Uniprot

Q969F8

Synonyms:

KISS1R; AXOR12; CPPB1; GPR54; HH8; HOT7T175; KISS-1R

Antibody Information

Recommended dilutions:

WB 1:500 - 1:1000 IHC 1:50
- 1:100

Source:

Rabbit

Isotype:

IgG

Purification:

Affinity purification

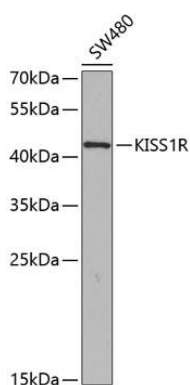
Immunogen:

A synthetic peptide of human KISS1R

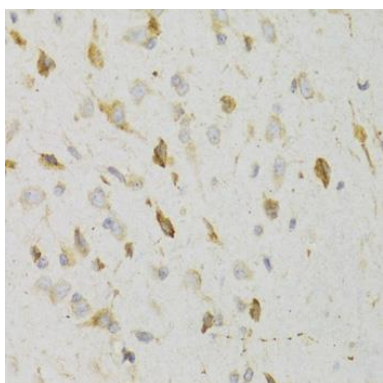
Storage:

Store at -20°C. Avoid freeze / thaw cycles. Buffer: PBS with 0.02% sodium azide, 50% glycerol, pH7.3.

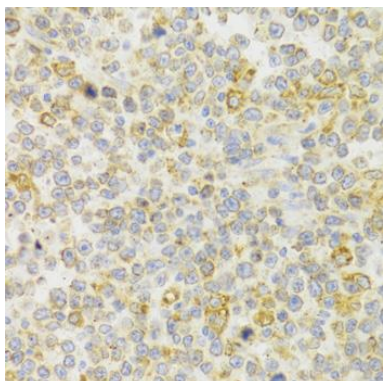
Product Images



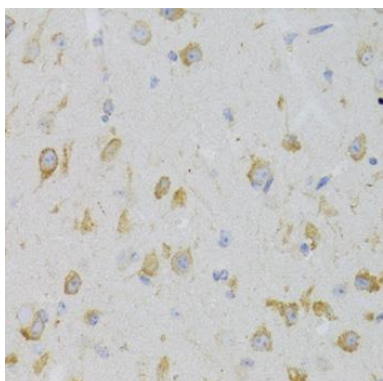
Western blot analysis of extracts of SW480 cells, using KISS1R antibody (CAB2967) at 1:350 dilution. Secondary antibody: HRP Goat Anti-Rabbit IgG (H+L) (CABS014) at 1:10000 dilution. Lysates/proteins: 25ug per lane. Blocking buffer: 3% nonfat dry milk in TBST. Detection: ECL Basic Kit (CABM00020). Exposure time: 90s.



Immunohistochemistry of paraffin-embedded rat brain using KISS1R Antibody (CAB2967) at dilution of 1:100 (40x lens).



Immunohistochemistry of paraffin-embedded human B cell lymphoma using KISS1R Antibody (CAB2967) at dilution of 1:100 (40x lens).



Immunohistochemistry of paraffin-embedded mouse brain using KISS1R Antibody (CAB2967) at dilution of 1:100 (40x lens).