

KCNH2 Rabbit Polyclonal Antibody



CAB2968

Product Information

Size:

20uL, 50uL, 100uL, 200uL

Observed MW:

148kDa

Calculated MW:

60kDa/90kDa/97kDa/115kDa
/121kDa/126kDa

Applications:

WB IHC

Reactivity:

Human, Mouse

Antibody Information

Recommended dilutions:

WB 1:500 - 1:2000 IHC 1:50
- 1:200

Source:

Rabbit

Isotype:

IgG

Purification:

Affinity purification

Protein Background

This gene encodes a voltage-activated potassium channel belonging to the eag family. It shares sequence similarity with the Drosophila ether-a-go-go (eag) gene. Mutations in this gene can cause long QT syndrome type 2 (LQT2). Transcript variants encoding distinct isoforms have been identified.

Immunogen information

Gene ID:

3757

Uniprot

Q12809

Synonyms:

KCNH2; ERG-1; ERG1; H-ERG; HERG; HERG1; Kv11.1; LQT2; SQT1

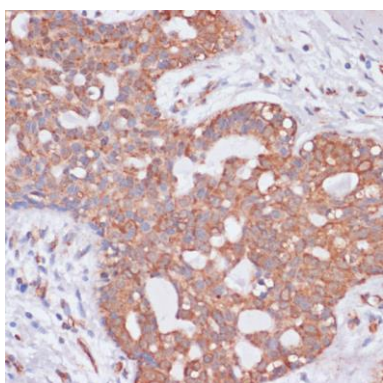
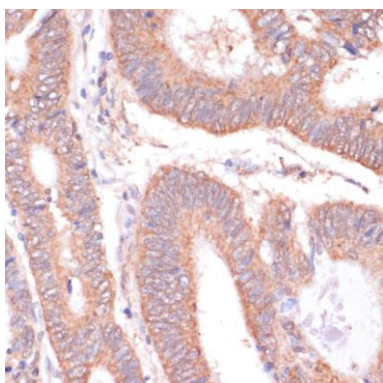
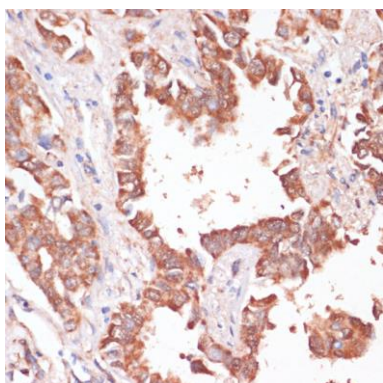
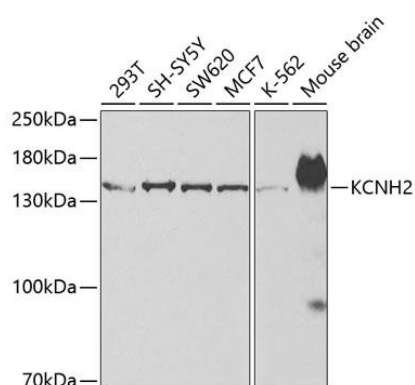
Immunogen:

A synthetic peptide of human KCNH2

Storage:

Store at -20°C. Avoid freeze / thaw cycles. Buffer: PBS with 0.02% sodium azide, 50% glycerol, pH7.3.

Product Images



Western blot analysis of extracts of various cell lines, using KCNH2 antibody (CAB2968) at 1:500 dilution. Secondary antibody: HRP Goat Anti-Rabbit IgG (H+L) (CABS014) at 1:10000 dilution. Lysates/proteins: 25ug per lane. Blocking buffer: 3% nonfat dry milk in TBST. Detection: ECL Enhanced Kit (CABM00021). Exposure time: 30s.

Immunohistochemistry of paraffin-embedded human lung cancer using KCNH2 antibody (CAB2968) at dilution of 1:100 (40x lens).

Immunohistochemistry of paraffin-embedded human colon carcinoma using KCNH2 antibody (CAB2968) at dilution of 1:100 (40x lens).

Immunohistochemistry of paraffin-embedded human breast cancer using KCNH2 antibody (CAB2968) at dilution of 1:100 (40x lens).