

# HCN1 Rabbit Polyclonal Antibody



CAB2969

---

## Product Information

### Size:

20uL, 50uL, 100uL, 200uL

### Observed MW:

99kDa

### Calculated MW:

98kDa

### Applications:

WB

### Reactivity:

Human, Mouse

## Protein Background

The membrane protein encoded by this gene is a hyperpolarization-activated cation channel that contributes to the native pacemaker currents in heart and neurons. The encoded protein can homodimerize or heterodimerize with other pore-forming subunits to form a potassium channel. This channel may act as a receptor for sour tastes.

## Immunogen information

### Gene ID:

348980

### Uniprot

O60741

### Synonyms:

HCN1; BCNG-1; BCNG1; EIEE24; HAC-2

## Antibody Information

### Recommended dilutions:

WB 1:500 - 1:2000

### Source:

Rabbit

### Isotype:

IgG

### Purification:

Affinity purification

### Immunogen:

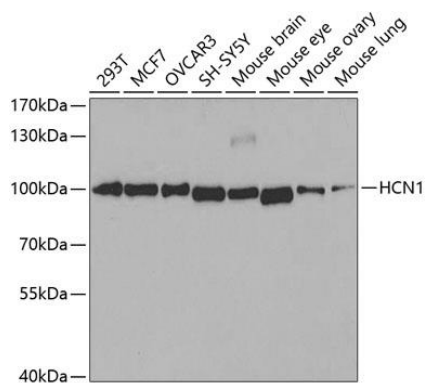
A synthetic peptide of human HCN1

### Storage:

Store at -20°C. Avoid freeze / thaw cycles. Buffer: PBS with 0.02% sodium azide, 50% glycerol, pH7.3.

## Product Images

---



Western blot analysis of extracts of various cell lines, using HCN1 antibody (CAB2969) at 1:400 dilution. Secondary antibody: HRP Goat Anti-Rabbit IgG (H+L) (CABS014) at 1:10000 dilution. Lysates/proteins: 25ug per lane. Blocking buffer: 3% nonfat dry milk in TBST. Detection: ECL Basic Kit (CABM00020). Exposure time: 90s.