

KLF5 Rabbit Polyclonal Antibody



CAB2989

Product Information

Size:

20uL, 50uL, 100uL, 200uL

Observed MW:

55kDa

Calculated MW:

18kDa/33kDa/41kDa/50kDa

Applications:

WB IHC IF

Reactivity:

Human, Mouse

Antibody Information

Recommended dilutions:

WB 1:200 - 1:1000 IHC 1:50
- 1:200 IF 1:50 - 1:200

Source:

Rabbit

Isotype:

IgG

Purification:

Affinity purification

Protein Background

This gene encodes a member of the Kruppel-like factor subfamily of zinc finger proteins. The encoded protein is a transcriptional activator that binds directly to a specific recognition motif in the promoters of target genes. This protein acts downstream of multiple different signaling pathways and is regulated by post-translational modification. It may participate in both promoting and suppressing cell proliferation. Expression of this gene may be changed in a variety of different cancers and in cardiovascular disease. Alternative splicing results in multiple transcript variants.

Immunogen information

Gene ID:

688

Uniprot

Q13887

Synonyms:

KLF5; BTEB2; CKLF; IKLF

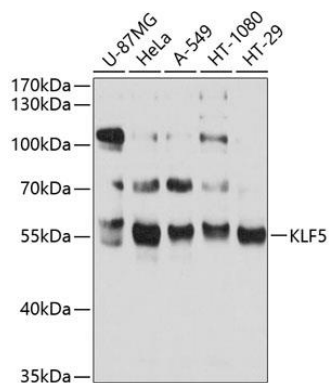
Immunogen:

Recombinant fusion protein containing a sequence corresponding to amino acids 1-250 of human KLF5 (NP_001721.2).

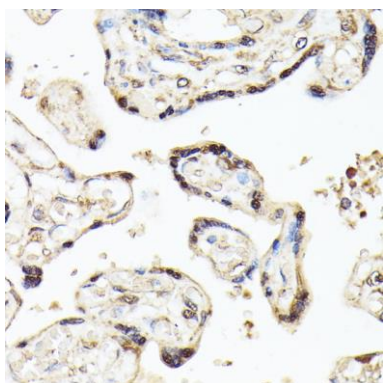
Storage:

Store at -20°C. Avoid freeze / thaw cycles. Buffer: PBS with 0.02% sodium azide, 50% glycerol, pH7.3.

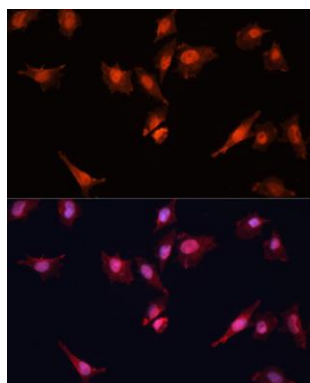
Product Images



Western blot analysis of extracts of various cell lines, using KLF5 antibody (CAB2989) at 1:1000 dilution. Secondary antibody: HRP Goat Anti-Rabbit IgG (H+L) (CABS014) at 1:10000 dilution. Lysates/proteins: 25ug per lane. Blocking buffer: 3% nonfat dry milk in TBST. Detection: ECL Basic Kit (CABM00020). Exposure time: 15s.



Immunohistochemistry of paraffin-embedded human placenta using KLF5 antibody (CAB2989) at dilution of 1:100 (40x lens).



Immunofluorescence analysis of A375 cells using KLF5 antibody (CAB2989) at dilution of 1:100. Blue: DAPI for nuclear staining.