

LRPAP1 Rabbit Polyclonal Antibody



CAB3004

Product Information

Size:

20uL, 50uL, 100uL, 200uL

Observed MW:

39kDa

Calculated MW:

41kDa

Applications:

WB IHC IF

Reactivity:

Human, Mouse, Rat

Antibody Information

Recommended dilutions:

WB 1:500 - 1:2000 IHC 1:50
- 1:100 IF 1:50 - 1:100

Source:

Rabbit

Isotype:

IgG

Purification:

Affinity purification

Protein Background

This gene encodes a protein that interacts with the low density lipoprotein (LDL) receptor-related protein and facilitates its proper folding and localization by preventing the binding of ligands. Mutations in this gene have been identified in individuals with myopia 23. Alternative splicing results in multiple transcript variants.

Immunogen information

Gene ID:

4043

Uniprot

P30533

Synonyms:

LRPAP1; A2MRAP; A2RAP; HBP44; MRAP; MYP23; RAP; alpha-2-MRAP

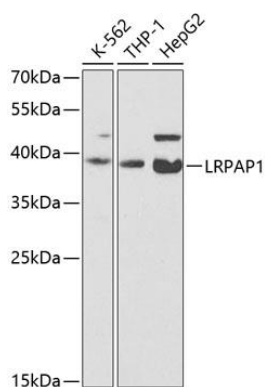
Immunogen:

A synthetic peptide of human LRPAP1

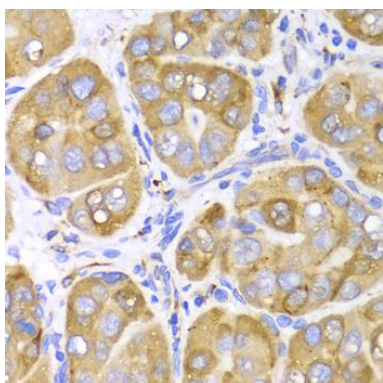
Storage:

Store at -20°C. Avoid freeze / thaw cycles. Buffer: PBS with 0.02% sodium azide, 50% glycerol, pH7.3.

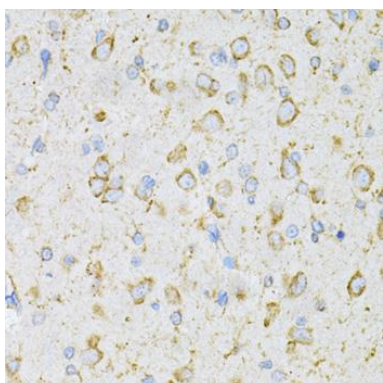
Product Images



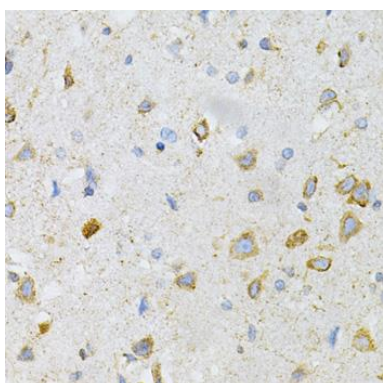
Western blot analysis of extracts of various cell lines, using LRPAP1 antibody (CAB3004) at 1:200 dilution. Secondary antibody: HRP Goat Anti-Rabbit IgG (H+L) (CABS014) at 1:10000 dilution. Lysates/proteins: 25ug per lane. Blocking buffer: 3% nonfat dry milk in TBST. Detection: ECL Basic Kit (CABM00020). Exposure time: 90s.



Immunohistochemistry of paraffin-embedded human liver cancer using LRPAP1 Antibody (CAB3004) at dilution of 1:100 (40x lens).



Immunohistochemistry of paraffin-embedded rat brain using LRPAP1 Antibody (CAB3004) at dilution of 1:200 (40x lens).



Immunohistochemistry of paraffin-embedded mouse brain using LRPAP1 Antibody (CAB3004) at dilution of 1:200 (40x lens).