

MC3R Rabbit Polyclonal Antibody



CAB3011

Product Information

Size:

20uL, 50uL, 100uL, 200uL

Observed MW:

36kDa

Calculated MW:

36kDa

Applications:

WB

Reactivity:

Human, Mouse

Protein Background

This gene encodes a G-protein-coupled receptor for melanocyte-stimulating hormone and adrenocorticotrophic hormone that is expressed in tissues other than the adrenal cortex and melanocytes. This gene maps to the same region as the locus for benign neonatal epilepsy. Mice deficient for this gene have increased fat mass despite decreased food intake, suggesting a role for this gene product in the regulation of energy homeostasis. Mutations in this gene are associated with a susceptibility to obesity in humans.

Immunogen information

Gene ID:

4159

Uniprot

P41968

Synonyms:

MC3R; BMIQ9; MC3; MC3-R; OB20; OQTL

Antibody Information

Recommended dilutions:

WB 1:500 - 1:2000

Source:

Rabbit

Isotype:

IgG

Purification:

Affinity purification

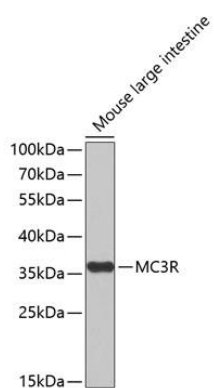
Immunogen:

A synthetic peptide of human MC3R

Storage:

Store at -20°C. Avoid freeze / thaw cycles. Buffer: PBS with 0.02% sodium azide, 50% glycerol, pH7.3.

Product Images



Western blot analysis of extracts of mouse large intestine, using MC3R antibody (CAB3011). Secondary antibody: HRP Goat Anti-Rabbit IgG (H+L) (CABS014) at 1:10000 dilution. Lysates/proteins: 25ug per lane. Blocking buffer: 3% nonfat dry milk in TBST.