

MCT1/SLC16A1 Rabbit Polyclonal Antibody



CAB3013

Product Information

Size:

20uL, 50uL, 100uL, 200uL

Observed MW:

46kDa

Calculated MW:

46kDa/53kDa

Applications:

WB IHC

Reactivity:

Human, Mouse, Rat

Protein Background

The protein encoded by this gene is a proton-linked monocarboxylate transporter that catalyzes the movement of many monocarboxylates, such as lactate and pyruvate, across the plasma membrane. Mutations in this gene are associated with erythrocyte lactate transporter defect. Alternatively spliced transcript variants have been found for this gene.

Immunogen information

Gene ID:

6566

Uniprot

P53985

Synonyms:

SLC16A1; HHF7; MCT; MCT1; MCT1D

Antibody Information

Recommended dilutions:

WB 1:1000 - 1:2000 IHC

1:50 - 1:200

Source:

Rabbit

Immunogen:

A synthetic peptide of human MCT1

Storage:

Store at -20°C. Avoid freeze / thaw cycles. Buffer: PBS with 0.02% sodium azide, 50% glycerol, pH7.3.

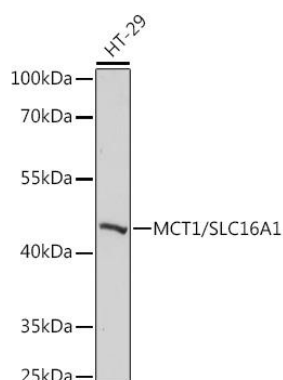
Isotype:

IgG

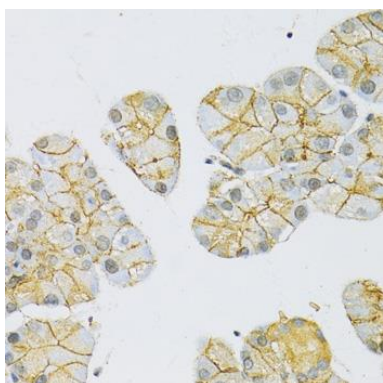
Purification:

Affinity purification

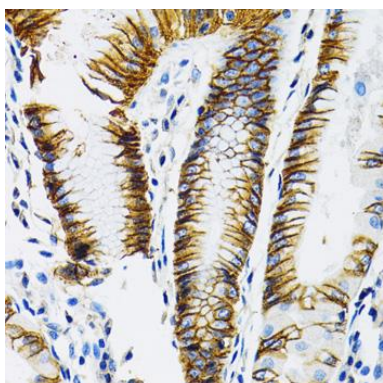
Product Images



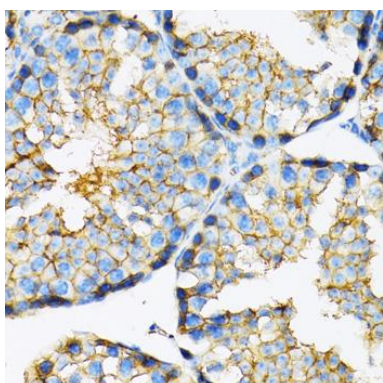
Western blot analysis of extracts of HT-29 cells, using MCT1/SLC16A1 antibody (CAB3013) at 1:1000 dilution. Secondary antibody: HRP Goat Anti-Rabbit IgG (H+L) (CABS014) at 1:10000 dilution. Lysates/proteins: 25ug per lane. Blocking buffer: 3% nonfat dry milk in TBST. Detection: ECL Basic Kit (CABM00020). Exposure time: 90s.



Immunohistochemistry of paraffin-embedded rat pancreas using MCT1/SLC16A1 antibody (CAB3013) at dilution of 1:100 (40x lens).



Immunohistochemistry of paraffin-embedded human stomach using MCT1/SLC16A1 antibody (CAB3013) at dilution of 1:100 (40x lens).



Immunohistochemistry of paraffin-embedded mouse testis using MCT1/SLC16A1 antibody (CAB3013) at dilution of 1:100 (40x lens).