

BEST1 Rabbit Polyclonal Antibody



CAB3022

Product Information

Size:

20uL, 50uL, 100uL, 200uL

Observed MW:

70kDa

Calculated MW:

57kDa/67kDa/69kDa

Applications:

WB IHC

Reactivity:

Human, Mouse, Rat

Antibody Information

Recommended dilutions:

WB 1:500 - 1:2000 IHC 1:50
- 1:200

Source:

Rabbit

Isotype:

IgG

Purification:

Affinity purification

Protein Background

This gene encodes a member of the bestrophin gene family. This small gene family is characterized by proteins with a highly conserved N-terminus with four to six transmembrane domains. Bestrophins may form chloride ion channels or may regulate voltage-gated L-type calcium-ion channels. Bestrophins are generally believed to form calcium-activated chloride-ion channels in epithelial cells but they have also been shown to be highly permeable to bicarbonate ion transport in retinal tissue. Mutations in this gene are responsible for juvenile-onset vitelliform macular dystrophy (VMD2), also known as Best macular dystrophy, in addition to adult-onset vitelliform macular dystrophy (AVMD) and other retinopathies. Alternative splicing results in multiple variants encoding distinct isoforms.

Immunogen information

Gene ID:

7439

Uniprot

O76090

Synonyms:

BEST1; ARB; BEST; BMD; RP50; TU15B; VMD2

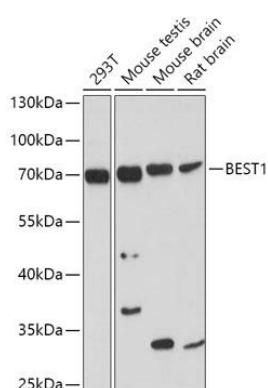
Immunogen:

A synthetic peptide corresponding to a sequence within amino acids 200-300 of human BEST1 (NP_004174.1).

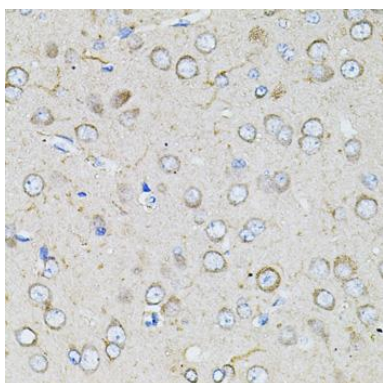
Storage:

Store at -20°C. Avoid freeze / thaw cycles. Buffer: PBS with 0.02% sodium azide, 50% glycerol, pH7.3.

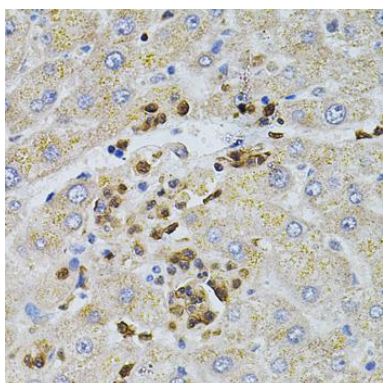
Product Images



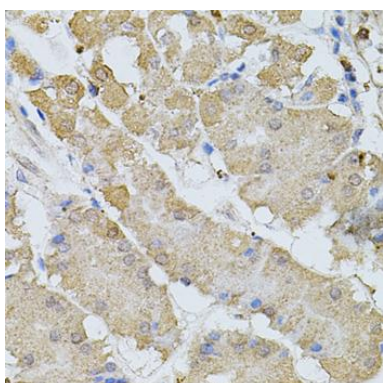
Western blot analysis of extracts of various cell lines, using BEST1 antibody (CAB3022) at 1:1000 dilution. Secondary antibody: HRP Goat Anti-Rabbit IgG (H+L) (CABS014) at 1:10000 dilution. Lysates/proteins: 25ug per lane. Blocking buffer: 3% nonfat dry milk in TBST. Detection: ECL Basic Kit (CABM00020). Exposure time: 90s.



Immunohistochemistry of paraffin-embedded rat brain using BEST1 antibody (CAB3022) at dilution of 1:100 (40x lens).



Immunohistochemistry of paraffin-embedded human liver damage using BEST1 antibody (CAB3022) at dilution of 1:100 (40x lens).



Immunohistochemistry of paraffin-embedded human stomach using BEST1 antibody (CAB3022) at dilution of 1:100 (40x lens).