

# MMP10 Rabbit Polyclonal Antibody



CAB3033

## Product Information

### Size:

20uL, 50uL, 100uL, 200uL

### Observed MW:

54kDa

### Calculated MW:

54kDa

### Applications:

WB IHC IF

### Reactivity:

Human, Mouse, Rat

## Antibody Information

### Recommended dilutions:

WB 1:500 - 1:2000 IHC 1:50  
- 1:200 IF 1:50 - 1:200

### Source:

Rabbit

### Isotype:

IgG

### Purification:

Affinity purification

## Protein Background

This gene encodes a member of the peptidase M10 family of matrix metalloproteinases (MMPs). Proteins in this family are involved in the breakdown of extracellular matrix in normal physiological processes, such as embryonic development, reproduction, and tissue remodeling, as well as in disease processes, such as arthritis and metastasis. The encoded preproprotein is proteolytically processed to generate the mature protease. This secreted protease breaks down fibronectin, laminin, elastin, proteoglycan core protein, gelatins, and several types of collagen. The gene is part of a cluster of MMP genes on chromosome 11.

## Immunogen information

### Gene ID:

4319

### Uniprot

P09238

### Synonyms:

MMP10; SL-2; STMY2; stromelysin-2; MMP10

### Immunogen:

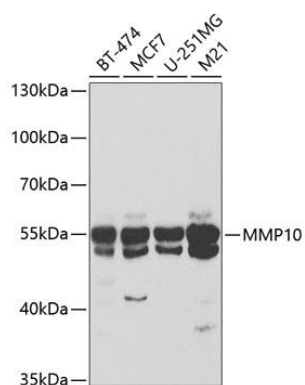
A synthetic peptide of human MMP10

### Storage:

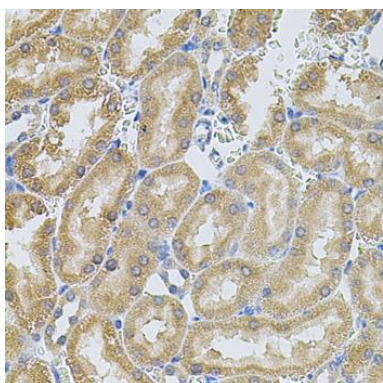
Store at -20°C. Avoid freeze / thaw cycles. Buffer: PBS with 0.02% sodium azide, 50% glycerol, pH7.3.

## Product Images

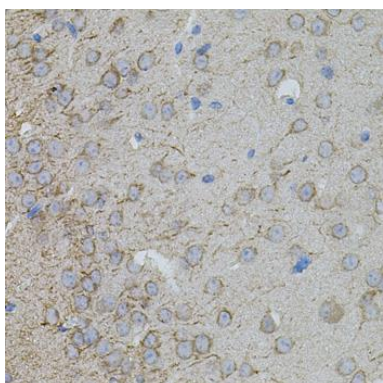
---



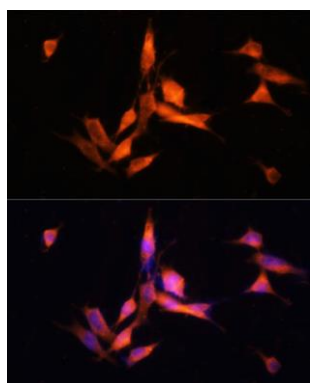
Western blot analysis of extracts of various cell lines, using MMP10 antibody (CAB3033) at 1:400 dilution. Secondary antibody: HRP Goat Anti-Rabbit IgG (H+L) (CABS014) at 1:10000 dilution. Lysates/proteins: 25ug per lane. Blocking buffer: 3% nonfat dry milk in TBST.



Immunohistochemistry of paraffin-embedded rat kidney using MMP10 antibody (CAB3033) at dilution of 1:100 (40x lens).



Immunohistochemistry of paraffin-embedded mouse brain using MMP10 antibody (CAB3033) at dilution of 1:100 (40x lens).



Immunofluorescence analysis of NIH-3T3 cells using MMP10 Polyclonal Antibody (CAB3033) at dilution of 1:100 (40x lens). Blue: DAPI for nuclear staining.