

# MYL9 Rabbit Polyclonal Antibody



CAB3039

---

## Product Information

### Size:

20uL, 50uL, 100uL, 200uL

### Observed MW:

20kDa

### Calculated MW:

13kDa/19kDa

### Applications:

WB IF

### Reactivity:

Human, Mouse, Rat

## Protein Background

Myosin, a structural component of muscle, consists of two heavy chains and four light chains. The protein encoded by this gene is a myosin light chain that may regulate muscle contraction by modulating the ATPase activity of myosin heads. The encoded protein binds calcium and is activated by myosin light chain kinase. Two transcript variants encoding different isoforms have been found for this gene.

## Immunogen information

### Gene ID:

10398

### Uniprot

P24844

### Synonyms:

MYL9; LC20; MLC-2C; MLC2; MRLC1; MYRL2

## Antibody Information

### Recommended dilutions:

WB 1:500 - 1:2000 IF 1:50 - 1:200

### Source:

Rabbit

### Isotype:

IgG

### Purification:

Affinity purification

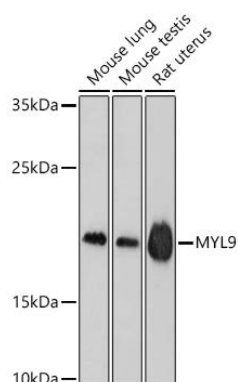
### Immunogen:

A synthetic peptide corresponding to a sequence within amino acids 1-100 of human MYL9 (NP\_006088.2).

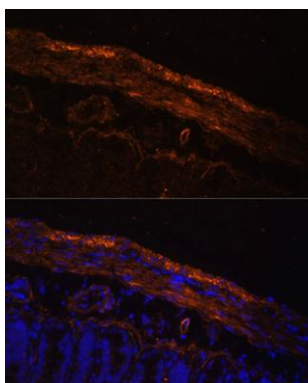
### Storage:

Store at -20°C. Avoid freeze / thaw cycles. Buffer: PBS with 0.02% sodium azide, 50% glycerol, pH7.3.

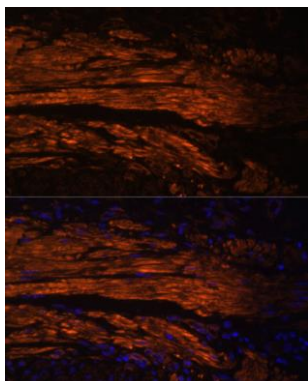
## Product Images



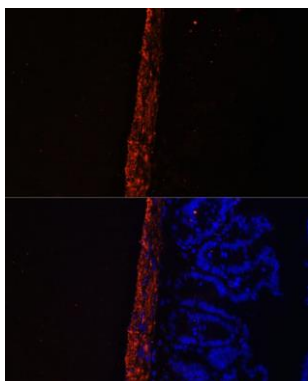
Western blot analysis of extracts of various cell lines, using MYL9 antibody (CAB3039) at 1:1000 dilution. Secondary antibody: HRP Goat Anti-Rabbit IgG (H+L) (CABS014) at 1:10000 dilution. Lysates/proteins: 25ug per lane. Blocking buffer: 3% nonfat dry milk in TBST. Detection: ECL Basic Kit (CABM00020). Exposure time: 90s.



Immunofluorescence analysis of Rat intestine using MYL9 antibody (CAB3039) at dilution of 1:100. Blue: DAPI for nuclear staining.



Immunofluorescence analysis of Human colon carcinoma using MYL9 antibody (CAB3039) at dilution of 1:100. Blue: DAPI for nuclear staining.



Immunofluorescence analysis of Mouse intestine using MYL9 antibody (CAB3039) at dilution of 1:100. Blue: DAPI for nuclear staining.