

E-Cadherin Rabbit Polyclonal Antibody



CAB3044

Product Information

Size:

20uL, 50uL, 100uL, 200uL

Observed MW:

125kDa

Calculated MW:

90kDa/97kDa

Applications:

WB, IHC, IF

Reactivity:

Human, Mouse

Category:

Polyclonal Antibodies

Protein Background

This gene encodes a classical cadherin of the cadherin superfamily. Alternative splicing results in multiple transcript variants, at least one of which encodes a preproprotein that is proteolytically processed to generate the mature glycoprotein. This calcium-dependent cell-cell adhesion protein is comprised of five extracellular cadherin repeats, a transmembrane region and a highly conserved cytoplasmic tail. Mutations in this gene are correlated with gastric, breast, colorectal, thyroid and ovarian cancer. Loss of function of this gene is thought to contribute to cancer progression by increasing proliferation, invasion, and/or metastasis. The ectodomain of this protein mediates bacterial adhesion to mammalian cells and the cytoplasmic domain is required for internalization. This gene is present in a gene cluster with other members of the cadherin family on chromosome 16.

Immunogen information

Gene ID:

999

Uniprot

P12830

Synonyms:

Arc-1; CD324; CDHE; ECAD; LCAM; UVO; CDH1; E-Cadherin

Antibody Information

Recommended dilutions:

WB 1:500 - 1:2000

IHC 1:50 - 1:200

IF 1:50 - 1:200

Source:

Rabbit

Isotype:

IgG

Purification:

Affinity purification

Immunogen:

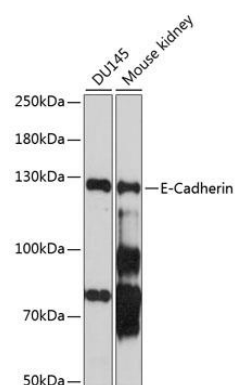
Recombinant fusion protein containing a sequence corresponding to amino acids 373-622 of human E-Cadherin (NP_004351.1).

Storage:

Store at -20°C. Avoid freeze / thaw cycles.

Buffer: PBS with 0.02% sodium azide, 50% glycerol, pH7.3.

Product Images



Western blot analysis of extracts of various cell lines, using E-Cadherin antibody (CAB3044) at 1:1000 dilution.

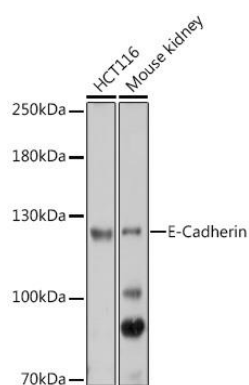
Secondary antibody: HRP Goat Anti-Rabbit IgG (H+L) (CABS014) at 1:10000 dilution.

Lysates/proteins: 25ug per lane.

Blocking buffer: 3% non-fat dry milk in TBST.

Detection: ECL Basic Kit (AbGn00020).

Exposure time: 90s.



Western blot analysis of extracts of various cell lines, using E-Cadherin antibody (CAB3044) at 1:1000 dilution.

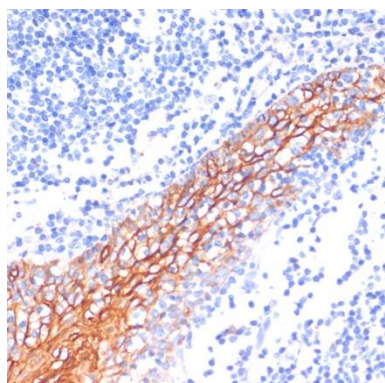
Secondary antibody: HRP Goat Anti-Rabbit IgG (H+L) (CABS014) at 1:10000 dilution.

Lysates/proteins: 25ug per lane.

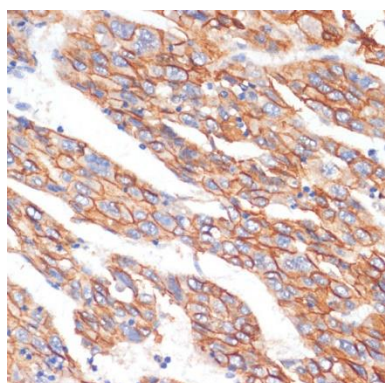
Blocking buffer: 3% non-fat dry milk in TBST.

Detection: ECL Basic Kit (AbGn00020).

Exposure time: 10s.



Immunohistochemistry of paraffin-embedded human tonsil using E-Cadherin antibody (CAB3044) at dilution of 1:100 (40x lens).



Immunohistochemistry of paraffin-embedded human liver cancer using E-Cadherin antibody (CAB3044) at dilution of 1:100 (40x lens).