

HCRTR2 Rabbit Polyclonal Antibody



CAB3057

Product Information

Size:

20uL, 50uL, 100uL, 200uL

Observed MW:

50kDa

Calculated MW:

50kDa

Applications:

WB

Reactivity:

Human, Mouse

Protein Background

The protein encoded by this gene is a G-protein coupled receptor involved in the regulation of feeding behavior. The encoded protein binds the hypothalamic neuropeptides orexin A and orexin B. A related gene (HCRTR1) encodes a G-protein coupled receptor that selectively binds orexin A.

Immunogen information

Gene ID:

3062

Uniprot

O43614

Synonyms:

HCRTR2; OX2R

Antibody Information

Recommended dilutions:

WB 1:500 - 1:2000

Source:

Rabbit

Isotype:

IgG

Purification:

Affinity purification

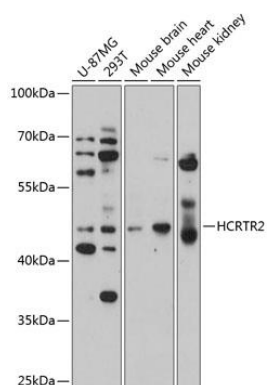
Immunogen:

Recombinant fusion protein containing a sequence corresponding to amino acids 380-444 of human HCRTR2 (NP_001517.2).

Storage:

Store at -20°C. Avoid freeze / thaw cycles. Buffer: PBS with 0.02% sodium azide, 50% glycerol, pH7.3.

Product Images



Western blot analysis of extracts of various cell lines, using HCRTR2 antibody (CAB3057) at 1:1000 dilution. Secondary antibody: HRP Goat Anti-Rabbit IgG (H+L) (CABS014) at 1:10000 dilution. Lysates/proteins: 25ug per lane. Blocking buffer: 3% nonfat dry milk in TBST. Detection: ECL Basic Kit (CABM00020). Exposure time: 30s.