

P2RY11 Rabbit Polyclonal Antibody



CAB3061

Product Information

Size:

20uL, 50uL, 100uL, 200uL

Observed MW:

Calculated MW:

40kDa

Applications:

IHC

Reactivity:

Human, Rat

Antibody Information

Recommended dilutions:

IHC 1:50 - 1:100

Source:

Rabbit

Isotype:

IgG

Purification:

Affinity purification

Protein Background

The product of this gene belongs to the family of G-protein coupled receptors. This family has several receptor subtypes with different pharmacological selectivity, which overlaps in some cases, for various adenosine and uridine nucleotides. This receptor is coupled to the stimulation of the phosphoinositide and adenylyl cyclase pathways and behaves as a selective purinoceptor. Naturally occurring read-through transcripts, resulting from intergenic splicing between this gene and an immediately upstream gene (PPAN, encoding peter pan homolog), have been found. The PPAN-P2RY11 read-through mRNA is ubiquitously expressed and encodes a fusion protein that shares identity with each individual gene product.

Immunogen information

Gene ID:

5032

Uniprot

Q96G91

Synonyms:

P2RY11; P2Y11

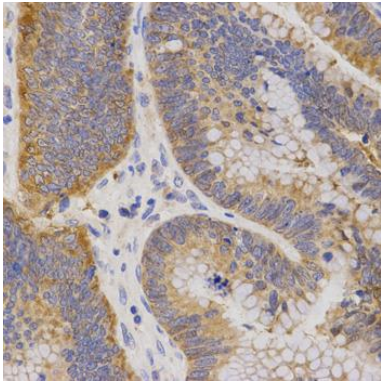
Immunogen:

Recombinant protein of human P2RY11

Storage:

Store at -20°C. Avoid freeze / thaw cycles. Buffer: PBS with 0.02% sodium azide, 50% glycerol, pH7.3.

Product Images



Immunohistochemistry of paraffin-embedded human rectal cancer using P2RY11 antibody (CAB3061) at dilution of 1:200 (40x lens).