

PAWR Rabbit Polyclonal Antibody



CAB3063

Product Information

Size:

20uL, 50uL, 100uL, 200uL

Observed MW:

43kDa

Calculated MW:

36kDa

Applications:

WB IHC

Reactivity:

Human, Mouse, Rat

Protein Background

The tumor suppressor WT1 represses and activates transcription. The protein encoded by this gene is a WT1-interacting protein that itself functions as a transcriptional repressor. It contains a putative leucine zipper domain which interacts with the zinc finger DNA binding domain of WT1. This protein is specifically upregulated during apoptosis of prostate cells.

Immunogen information

Gene ID:

5074

Uniprot

Q96IZ0

Synonyms:

PAWR; PAR4; Par-4

Antibody Information

Recommended dilutions:

WB 1:500 - 1:2000 IHC 1:50
- 1:100

Source:

Rabbit

Isotype:

IgG

Purification:

Affinity purification

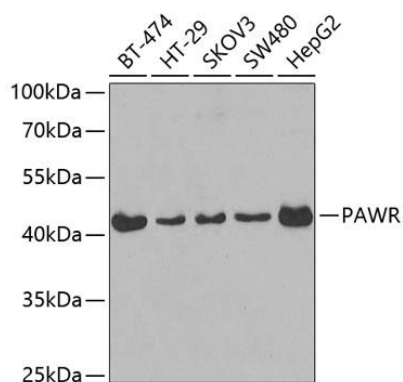
Immunogen:

Recombinant protein of human PAWR

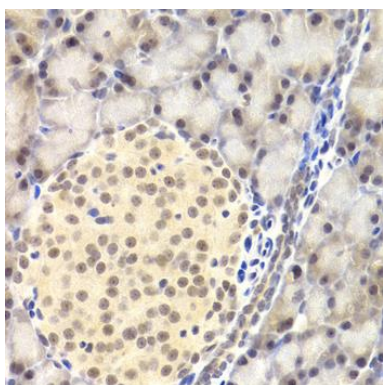
Storage:

Store at -20°C. Avoid freeze / thaw cycles. Buffer: PBS with 0.02% sodium azide, 50% glycerol, pH7.3.

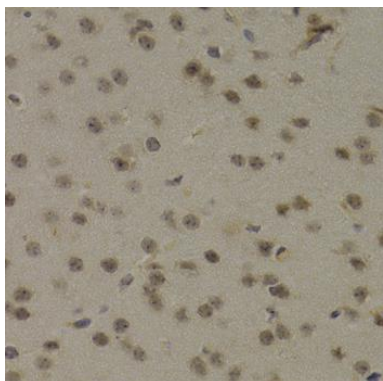
Product Images



Western blot analysis of extracts of various cell lines, using PAWR antibody (CAB3063) at 1:400 dilution. Secondary antibody: HRP Goat Anti-Rabbit IgG (H+L) (CABS014) at 1:10000 dilution. Lysates/proteins: 25ug per lane. Blocking buffer: 3% nonfat dry milk in TBST. Detection: ECL Basic Kit (CABM00020). Exposure time: 30s.



Immunohistochemistry of paraffin-embedded rat pancreas using PAWR Antibody (CAB3063) at dilution of 1:200 (40x lens).



Immunohistochemistry of paraffin-embedded mouse brain using PAWR Antibody (CAB3063) at dilution of 1:200 (40x lens).