

# Rad50 Rabbit Polyclonal Antibody



CAB3078

## Product Information

### Size:

20uL, 50uL, 100uL, 200uL

### Observed MW:

170kDa

### Calculated MW:

138kDa/153kDa/154kDa

### Applications:

WB IHC IP

### Reactivity:

Human, Mouse, Rat

## Antibody Information

### Recommended dilutions:

WB 1:500 - 1:2000 IHC 1:50  
- 1:200 IP 1:20 - 1:50

### Source:

Rabbit

### Isotype:

IgG

### Purification:

Affinity purification

## Protein Background

The protein encoded by this gene is highly similar to *Saccharomyces cerevisiae* Rad50, a protein involved in DNA double-strand break repair. This protein forms a complex with MRE11 and NBS1. The protein complex binds to DNA and displays numerous enzymatic activities that are required for nonhomologous joining of DNA ends. This protein, cooperating with its partners, is important for DNA double-strand break repair, cell cycle checkpoint activation, telomere maintenance, and meiotic recombination. Knockout studies of the mouse homolog suggest this gene is essential for cell growth and viability. Mutations in this gene are the cause of Nijmegen breakage syndrome-like disorder.

## Immunogen information

### Gene ID:

10111

### Uniprot

Q92878

### Synonyms:

RAD50; NBSLD; RAD502; hRad50

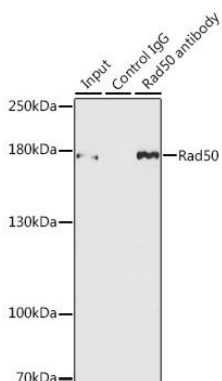
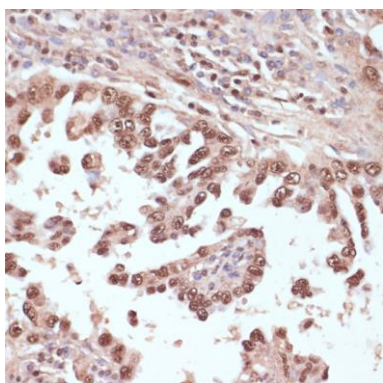
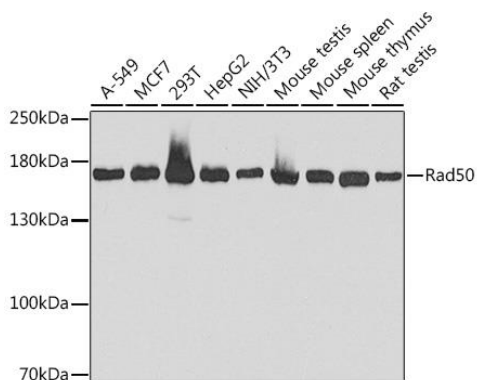
### Immunogen:

A synthetic peptide corresponding to a sequence within amino acids 1-100 of human Rad50 (NP\_005723.2).

### Storage:

Store at -20°C. Avoid freeze / thaw cycles. Buffer: PBS with 0.02% sodium azide, 50% glycerol, pH7.3.

## Product Images



Western blot analysis of extracts of various cell lines, using Rad50 antibody (CAB3078) at 1:1000 dilution. Secondary antibody: HRP Goat Anti-Rabbit IgG (H+L) (CABS014) at 1:10000 dilution. Lysates/proteins: 25ug per lane. Blocking buffer: 3% nonfat dry milk in TBST. Detection: ECL Basic Kit (CABM00020). Exposure time: 30s.

Immunohistochemistry of paraffin-embedded human lung cancer using Rad50 antibody (CAB3078) at dilution of 1:100 (40x lens).

Immunoprecipitation analysis of 150ug extracts of MCF7 cells using 3ug Rad50 antibody (CAB3078). Western blot was performed from the immunoprecipitate using Rad50 antibody (CAB3078) at a dilution of 1:500.