

# GEMIN2 Rabbit Polyclonal Antibody



CAB3082

## Product Information

### Size:

20uL, 50uL, 100uL, 200uL

### Observed MW:

35kDa

### Calculated MW:

4kDa/28kDa/29kDa/31kDa

### Applications:

WB IHC IF

### Reactivity:

Human, Mouse, Rat

## Antibody Information

### Recommended dilutions:

WB 1:500 - 1:1000 IHC 1:50  
- 1:200 IF 1:50 - 1:200

### Source:

Rabbit

### Isotype:

IgG

### Purification:

Affinity purification

## Protein Background

This gene encodes one of the proteins found in the SMN complex, which consists of several gemin proteins and the protein known as the survival of motor neuron protein. The SMN complex is localized to a subnuclear compartment called gems (gemini of coiled bodies) and is required for assembly of spliceosomal snRNPs and for pre-mRNA splicing. This protein interacts directly with the survival of motor neuron protein and it is required for formation of the SMN complex. A knockout mouse targeting the mouse homolog of this gene exhibited disrupted snRNP assembly and motor neuron degeneration.

## Immunogen information

### Gene ID:

8487

### Uniprot

O14893

### Synonyms:

GEMIN2; SIP1; SIP1-delta

### Immunogen:

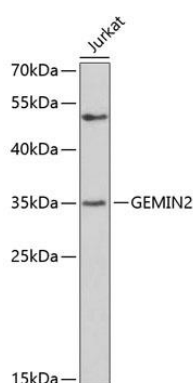
A synthetic peptide of human GEMIN2

### Storage:

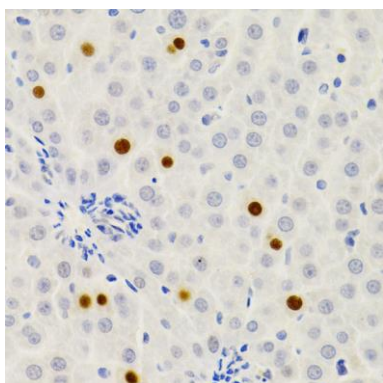
Store at -20°C. Avoid freeze / thaw cycles. Buffer: PBS with 0.02% sodium azide, 50% glycerol, pH7.3.

## Product Images

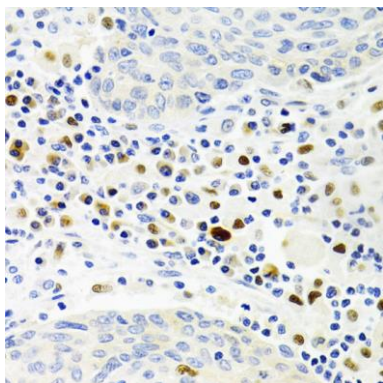
---



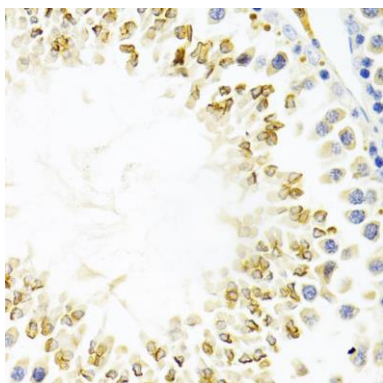
Western blot analysis of extracts of Jurkat cells, using GEMIN2 antibody (CAB3082) at 1:500 dilution. Secondary antibody: HRP Goat Anti-Rabbit IgG (H+L) (CABS014) at 1:10000 dilution. Lysates/proteins: 25ug per lane. Blocking buffer: 3% nonfat dry milk in TBST. Detection: ECL Basic Kit (CABM00020). Exposure time: 90s.



Immunohistochemistry of paraffin-embedded rat liver using GEMIN2 Antibody (CAB3082) at dilution of 1:200 (40x lens).



Immunohistochemistry of paraffin-embedded human lung cancer using GEMIN2 Antibody (CAB3082) at dilution of 1:100 (40x lens).



Immunohistochemistry of paraffin-embedded mouse testis using GEMIN2 Antibody (CAB3082) at dilution of 1:100 (40x lens).