

# HNF1A Rabbit Polyclonal Antibody



CAB3092

## Product Information

### Size:

20uL, 50uL, 100uL, 200uL

### Observed MW:

81KDa

### Calculated MW:

12kDa/27kDa/30kDa/43kDa/  
55-70kDa

### Applications:

WB IHC

### Reactivity:

Human, Mouse, Rat

## Antibody Information

### Recommended dilutions:

WB 1:500 - 1:2000 IHC 1:50  
- 1:100

### Source:

Rabbit

### Isotype:

IgG

### Purification:

Affinity purification

## Protein Background

The protein encoded by this gene is a transcription factor required for the expression of several liver-specific genes. The encoded protein functions as a homodimer and binds to the inverted palindrome 5'-GTTAATNATTAAC-3'. Defects in this gene are a cause of maturity onset diabetes of the young type 3 (MODY3) and also can result in the appearance of hepatic adenomas. Alternative splicing results in multiple transcript variants encoding different isoforms.

## Immunogen information

### Gene ID:

6927

### Uniprot

P20823

### Synonyms:

HNF1A; HNF-1A; HNF1; IDDM20; LFB1; MODY3; TCF-1; TCF1

### Immunogen:

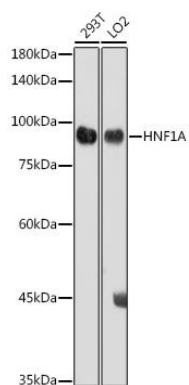
A synthetic peptide of human HNF1A

### Storage:

Store at -20°C. Avoid freeze / thaw cycles. Buffer: PBS with 0.02% sodium azide, 50% glycerol, pH7.3.

## Product Images

---



Western blot analysis of extracts of various cell lines, using HNF1A antibody (CAB3092) at 1:1000 dilution. Secondary antibody: HRP Goat Anti-Rabbit IgG (H+L) (CABS014) at 1:10000 dilution. Lysates/proteins: 25ug per lane. Blocking buffer: 3% nonfat dry milk in TBST. Detection: ECL Basic Kit (CABM00020). Exposure time: 180s.