

# TPM2 Rabbit Polyclonal Antibody



CAB3096

## Product Information

### Size:

20uL, 50uL, 100uL, 200uL

### Observed MW:

36kDa

### Calculated MW:

28kDa/32kDa

### Applications:

WB IHC IF IP

### Reactivity:

Human, Mouse, Rat

## Protein Background

This gene encodes beta-tropomyosin, a member of the actin filament binding protein family, and mainly expressed in slow, type 1 muscle fibers. Mutations in this gene can alter the expression of other sarcomeric tropomyosin proteins, and cause cap disease, nemaline myopathy and distal arthrogryposis syndromes. Alternatively spliced transcript variants encoding different isoforms have been found for this gene.

## Immunogen information

### Gene ID:

7169

### Uniprot

P07951

### Synonyms:

TPM2; AMCD1; DA1; DA2B; HEL-S-273; NEM4; TMSB

## Antibody Information

### Recommended dilutions:

WB 1:500 - 1:1000 IHC 1:50  
- 1:100 IF 1:50 - 1:100 IP  
1:50 - 1:100

### Source:

Rabbit

### Isotype:

IgG

### Purification:

Affinity purification

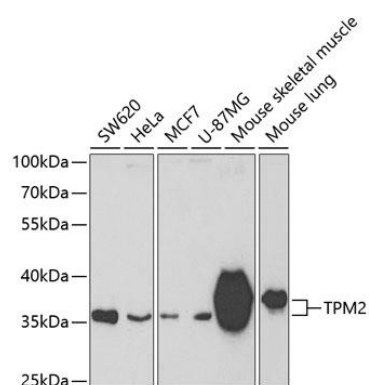
### Immunogen:

A synthetic peptide of human TPM2

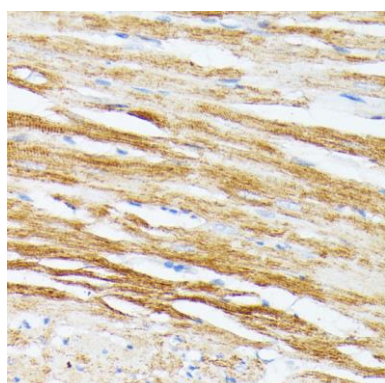
### Storage:

Store at -20°C. Avoid freeze / thaw cycles. Buffer: PBS with 0.02% sodium azide, 50% glycerol, pH7.3.

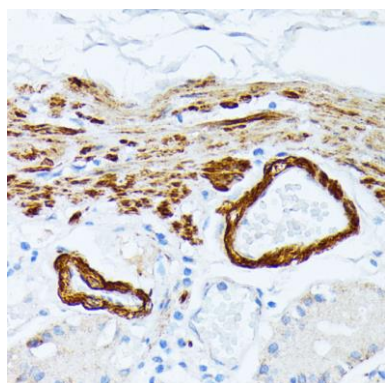
## Product Images



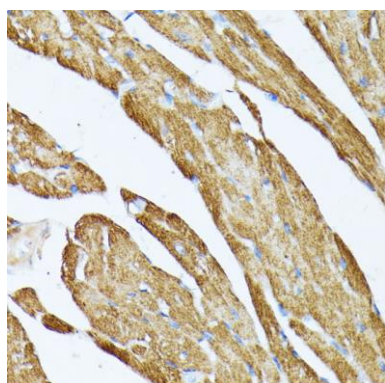
Western blot analysis of extracts of various cell lines, using TPM2 antibody (CAB3096) at 1:400 dilution. Secondary antibody: HRP Goat Anti-Rabbit IgG (H+L) (CABS014) at 1:10000 dilution. Lysates/proteins: 25ug per lane. Blocking buffer: 3% nonfat dry milk in TBST. Detection: ECL Basic Kit (CABM00020). Exposure time: 90s.



Immunohistochemistry of paraffin-embedded rat heart using TPM2 antibody (CAB3096) at dilution of 1:100 (40x lens).



Immunohistochemistry of paraffin-embedded human stomach using TPM2 antibody (CAB3096) at dilution of 1:100 (40x lens).



Immunohistochemistry of paraffin-embedded mouse heart using TPM2 antibody (CAB3096) at dilution of 1:100 (40x lens).